

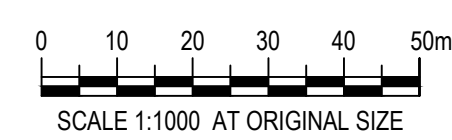
LEGEND:

	CONTOURS - CURRENT SURFACE
	CONTOURS - PRE-EXTRACTION SURFACE (1983)
	EDGE OF EXISTING TREES
	LIMIT OF SITE
	POLE-MOUNTED SECURITY CAMERA
	LIMIT OF GRADING WORK
	EX. MONITORING WELL
	TRUCK ROUTE DIRECTION
	MUD MAT (SEE DETAIL ON DET-1)

No.	Revision	Drawn	Job Manager	Project Director	Date
C	REVISED GRADING TO MEET 600M3 IMPORT LIMIT	A.S.	A.F.E	A.F.E	04/30/21
B	SECOND SUBMISSION	L.L.	A.F.E.	A.F.E.	08/07/19
A	FIRST SUBMISSION	L.L.	A.F.E.	A.F.E.	12/12/18

Drawing Revisions
 Note: * indicates signatures on original issue of drawing or last revision of drawing

GHD Inc.
 Conditions of Use: This document may only be used by GHD's client (and any other person who GHD has agreed can use this document) for the purpose for which it was prepared and must not be used by any other person or for any other purpose.



140 Allstate Parkway, Suite 210
 Markham Ontario L3R 5Y8
 T 1 905 752 4300 F 1 905 752 4301
 E ytomall@ghd.com W www.ghd.com

Client **RICE GROUP PTY LTD**

Project **MCCOWAN & MILL ROAD**

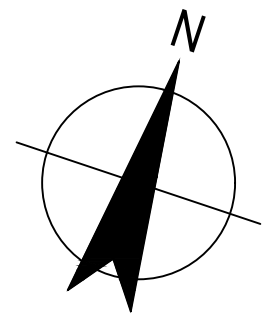
Title **SITE PLAN**

Scale	1:1000	DO NOT SCALE
Drawn	L. LI	
Designer	L. LI	
Drafting Check	A. EMER	
Design Check	A. EMER	
Approved (Project Director)	A. EMER	
Date	DEC 2018	

This Drawing must not be used for Construction unless signed as Approved Original Size

Drawing No. **SP-1** Arch D
 Rev. **B**

REVISED GRADING TO MEET 600M3 IMPORT LIMIT



LEGEND:

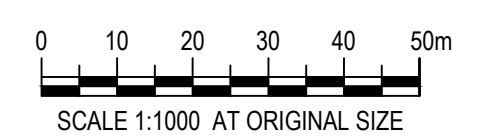
- CONTOURS - CURRENT SURFACE
- - - CONTOURS - PRE-EXTRACTION SURFACE (1983)
- - - EDGE OF EXISTING TREES
- - - - - LIMIT OF SITE



No.	Revision	Drawn	Job Manager	Project Director	Date
C	REVISED GRADING TO MEET 600M3 IMPORT LIMIT	A.S.	A.F.E.	A.F.E.	04/30/21
B	SECOND SUBMISSION	L.L.	A.F.E.	A.F.E.	08/07/19
A	FIRST SUBMISSION	L.L.	A.F.E.	A.F.E.	12/12/18

Drawing Revisions
 Note: * indicates signatures on original issue of drawing or last revision of drawing

GHD Inc.
 Conditions of Use: This document may only be used by GHD's client (and any other person who GHD has agreed can use this document) for the purpose for which it was prepared and must not be used by any other person or for any other purpose.



140 Allstate Parkway, Suite 210
 Markham Ontario L3R 5Y8
 T 1 905 752 4300 F 1 905 752 4301
 E ytomail@ghd.com W www.ghd.com

Client **RICE GROUP PTY LTD**

Project **MCCOWAN & MILL ROAD**

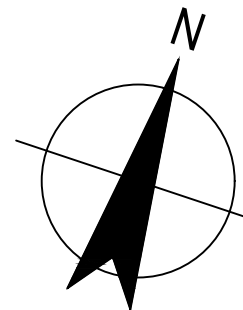
Title **EXISTING CONDITIONS (WITH PRE-EXTRACTION CONTOURS)**

Scale	1:1000	DO NOT SCALE
Drawn	L. LI	
Designer	L. LI	
Drafting Check	L. LI	
Design Check	A. EMER	
Approved (Project Director)	A. EMER	
Date	12/12/18	

This Drawing must not be used for Construction unless signed as Approved Original Size

Drawing No. **TOPO-1** Arch D
 Rev. **B**

REVISED GRADING TO MEET 600M3 IMPORT LIMIT



- LEGEND:**
- CONTOURS - CURRENT SURFACE
 - - - CONTOURS - PROPOSED SURFACE (BASED ON 1983 ORIGINAL GROUND)
 - EDGE OF EXISTING TREES
 - - - - - LIMIT OF SITE
 - POLE-MOUNTED SECURITY CAMERA
 - STRAW BALE REINFORCED DOUBLE SILT FENCE BARRIER
 - HEAVY DUTY SILT FENCE (OPSD 219.130)
 - TEMPORARY SWALE
 - ⊕ EX. MONITORING WELL TO BE PROTECTED WITH CONCRETE RISERS DURING FILL OPERATIONS
 - ⊕ ROCK FILL CHECK DAM (SEE DETAIL ON DET-1)
 - ⊕ MUD MAT (SEE DETAIL ON DET-1)
 - LIMIT OF STAGE WORK
 - ONE WAY TRAFFIC
 - ↔ TWO WAY TRAFFIC

DRAWING TO BE READ IN CONJUNCTION WITH NOTES AND DETAILS DRAWING (DET-1) PREPARED BY GHD

C	REVISED GRADING TO MEET 600M3 IMPORT LIMIT	A.S.	A.F.E.	A.F.E.	04/30/21
B	SECOND SUBMISSION	L.L.	A.F.E.	A.F.E.	08/07/19
A	FIRST SUBMISSION	L.L.	A.F.E.	A.F.E.	12/12/18
No.	Revision	Drawn	Job Manager	Project Director	Date

Drawing Revisions
 Note: * indicates signatures on original issue of drawing or last revision of drawing

GHD Inc.
 Conditions of Use: This document may only be used by GHD's client (and any other person who GHD has agreed can use this document) for the purpose for which it was prepared and must not be used by any other person or for any other purpose.



140 Allstate Parkway, Suite 210
 Markham Ontario L3R 5Y8
 T 1 905 752 4300 F 1 905 752 4301
 E ytomall@ghd.com W www.ghd.com

Client **RICE GROUP PTY LTD**

Project **MCCOWAN & MILL ROAD**

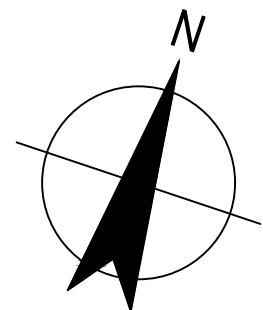
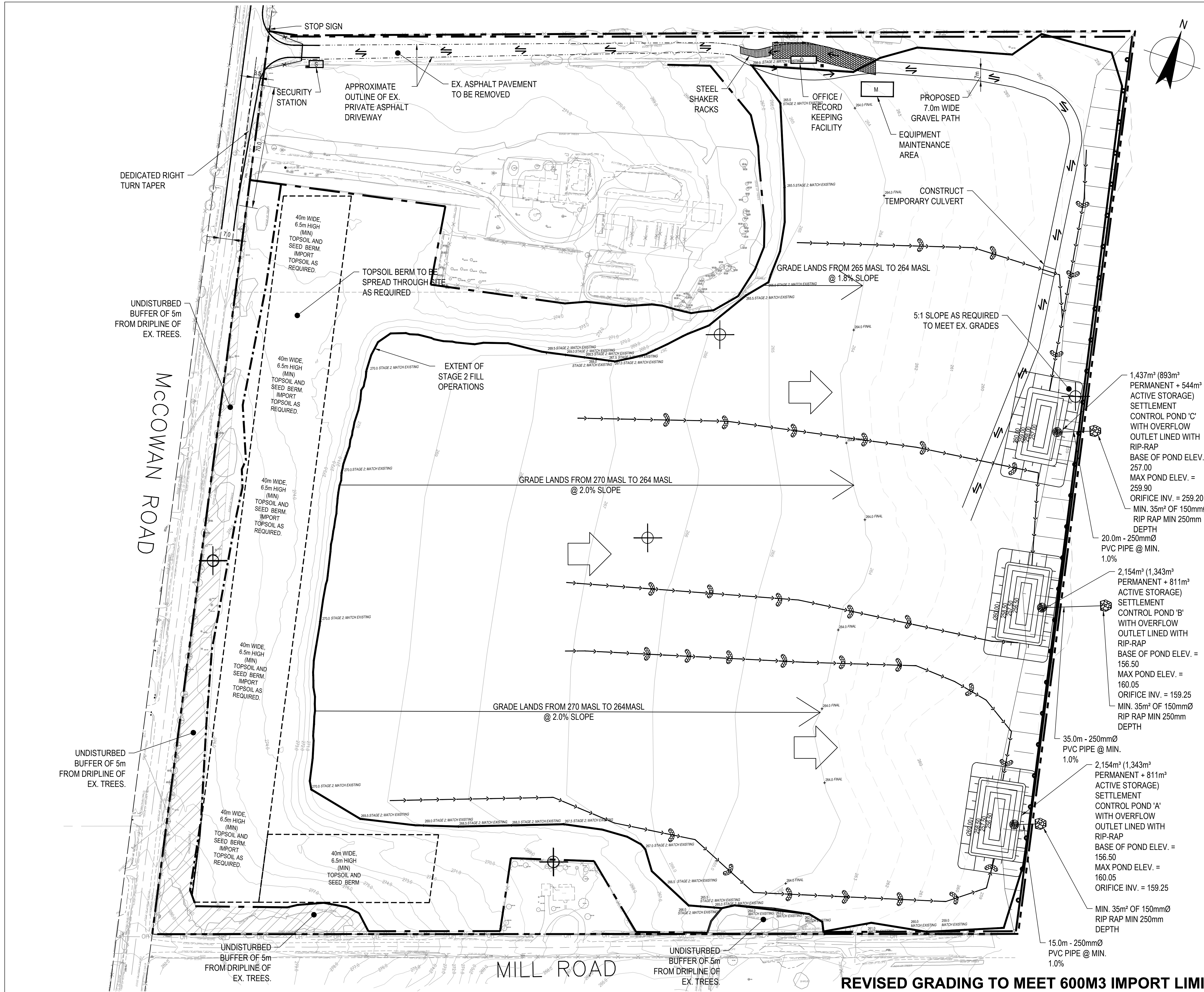
Title **SITE OPERATIONS AND ENVIRONMENTAL CONTROLS (STAGE 1)**

Scale	1:1000	DO NOT SCALE
Drawn	L. LI	
Designer	L. LI	
Drafting Check	A. EMER	
Design Check	A. EMER	
Approved (Project Director)	A. EMER	
Date	DEC 2018	

This Drawing must not be used for Construction unless signed as Approved

Drawing No. **OPS-1** Original Size **Arch D**
 Rev. **B**

REVISED GRADING TO MEET 600M3 IMPORT LIMIT



- LEGEND:**
- CONTOURS - CURRENT SURFACE
 - - - CONTOURS - PROPOSED SURFACE (BASED ON 1983 ORIGINAL GROUND)
 - EDGE OF EXISTING TREES
 - LIMIT OF SITE
 - POLE-MOUNTED SECURITY CAMERA
 - STRAW BALE REINFORCED DOUBLE SILT FENCE BARRIER
 - HEAVY DUTY SILT FENCE (OPSD 219.130)
 - TEMPORARY SWALE
 - ⊕ EX. MONITORING WELL TO BE PROTECTED WITH CONCRETE RISERS DURING FILL OPERATIONS
 - ⊕ ROCK FILL CHECK DAM (SEE DETAIL ON DET-1)
 - ▭ MUD MAT
 - ➔ OVERLAND FLOW DIRECTION
 - LIMIT OF STAGE WORK
 - ➔ ONE WAY TRAFFIC
 - ↔ TWO WAY TRAFFIC

DRAWING TO BE READ IN CONJUNCTION WITH NOTES AND DETAILS DRAWING (DET-1) PREPARED BY GHD

No.	Revision	Drawn	Job Manager	Project Director	Date
C	REVISED GRADING TO MEET 600M3 IMPORT LIMIT	A.S.	A.F.E.	A.F.E.	04/30/21
B	SECOND SUBMISSION	L.L.	A.F.E.	A.F.E.	08/07/19
A	FIRST SUBMISSION	L.L.	A.F.E.	A.F.E.	12/12/18

Drawing Revisions
 Note: * indicates signatures on original issue of drawing or last revision of drawing

GHD Inc.
 Conditions of Use: This document may only be used by GHD's client (and any other person who GHD has agreed can use this document) for the purpose for which it was prepared and must not be used by any other person or for any other purpose.



140 Allstate Parkway, Suite 210
 Markham Ontario L3R 5Y8
 T 1 905 752 4300 F 1 905 752 4301
 E ytomall@ghd.com W www.ghd.com

Client **RICE GROUP PTY LTD**

Project **MCCOWAN & MILL ROAD**

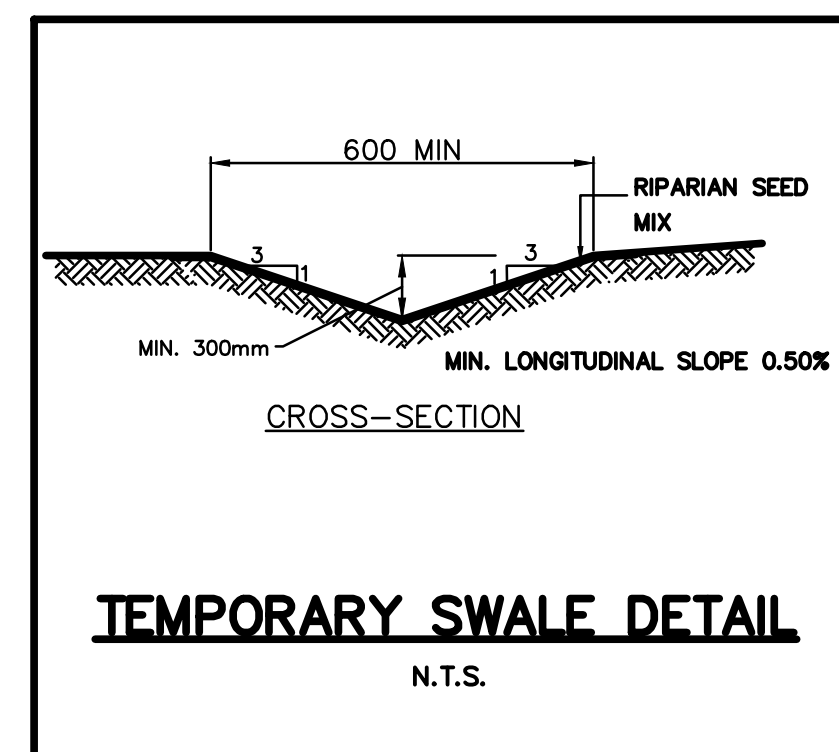
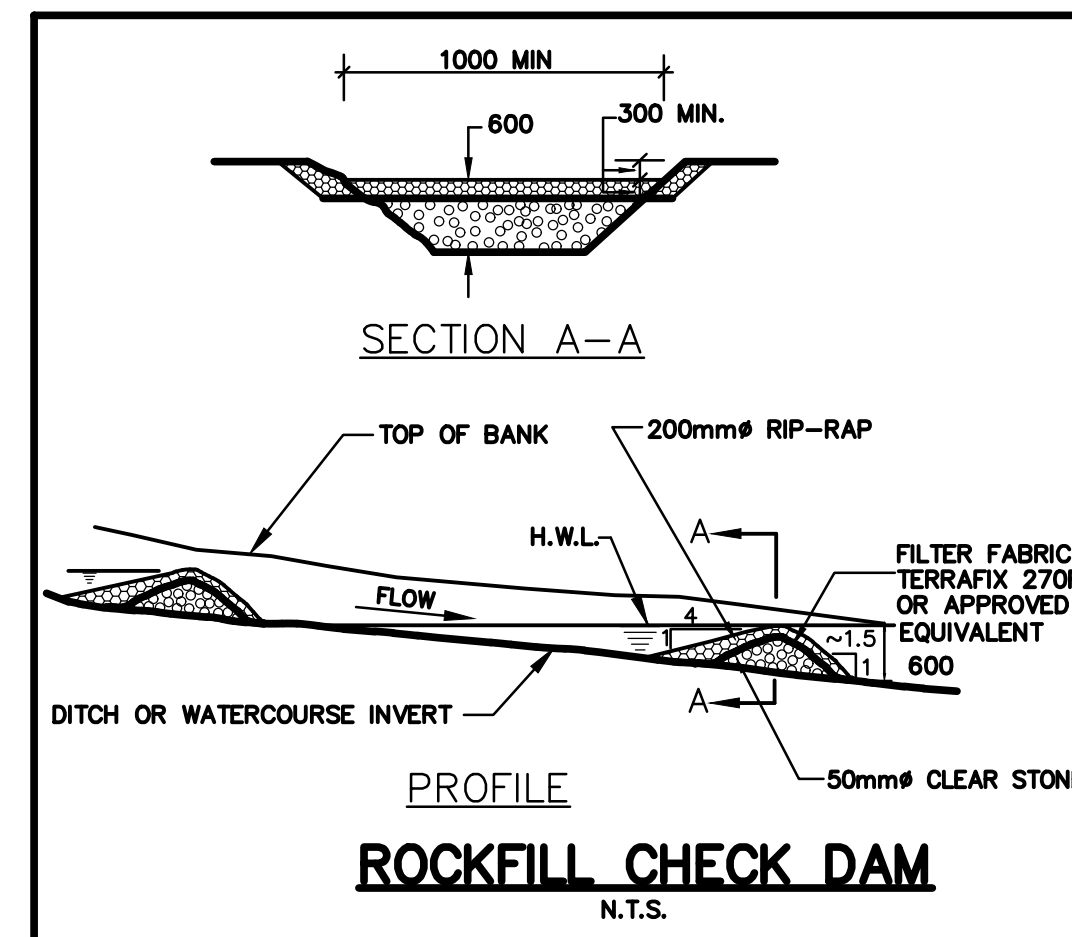
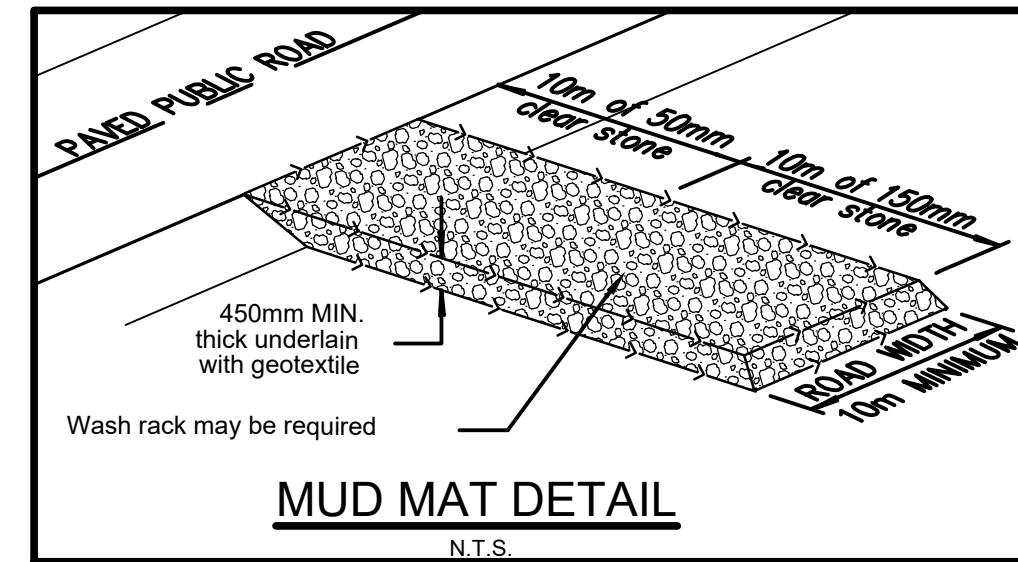
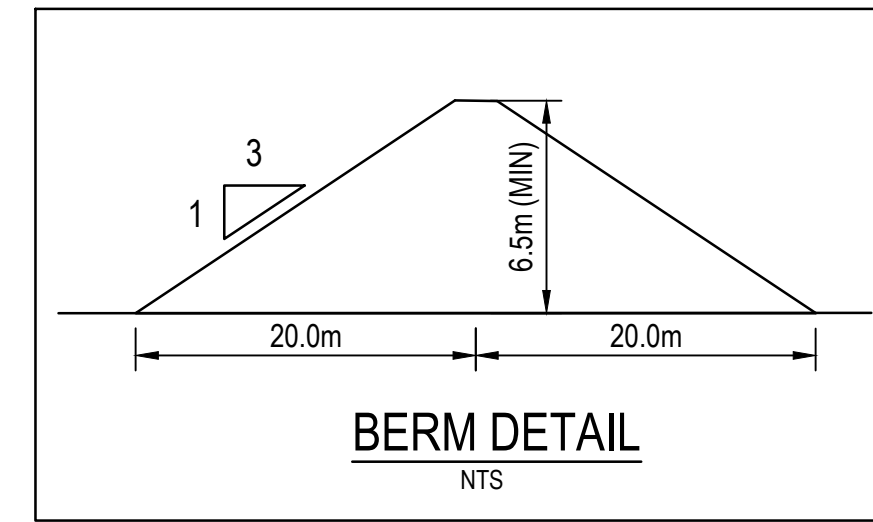
Title **SITE OPERATIONS AND ENVIRONMENTAL CONTROLS (STAGE 2)**

Scale	1:1000	DO NOT SCALE
Drawn	L. LI	
Designer	L. LI	
Drafting Check	A. EMER	
Design Check	A. EMER	
Approved (Project Director)	A. EMER	
Date	DEC 2018	

This Drawing must not be used for Construction unless signed as Approved
 Drawing No.

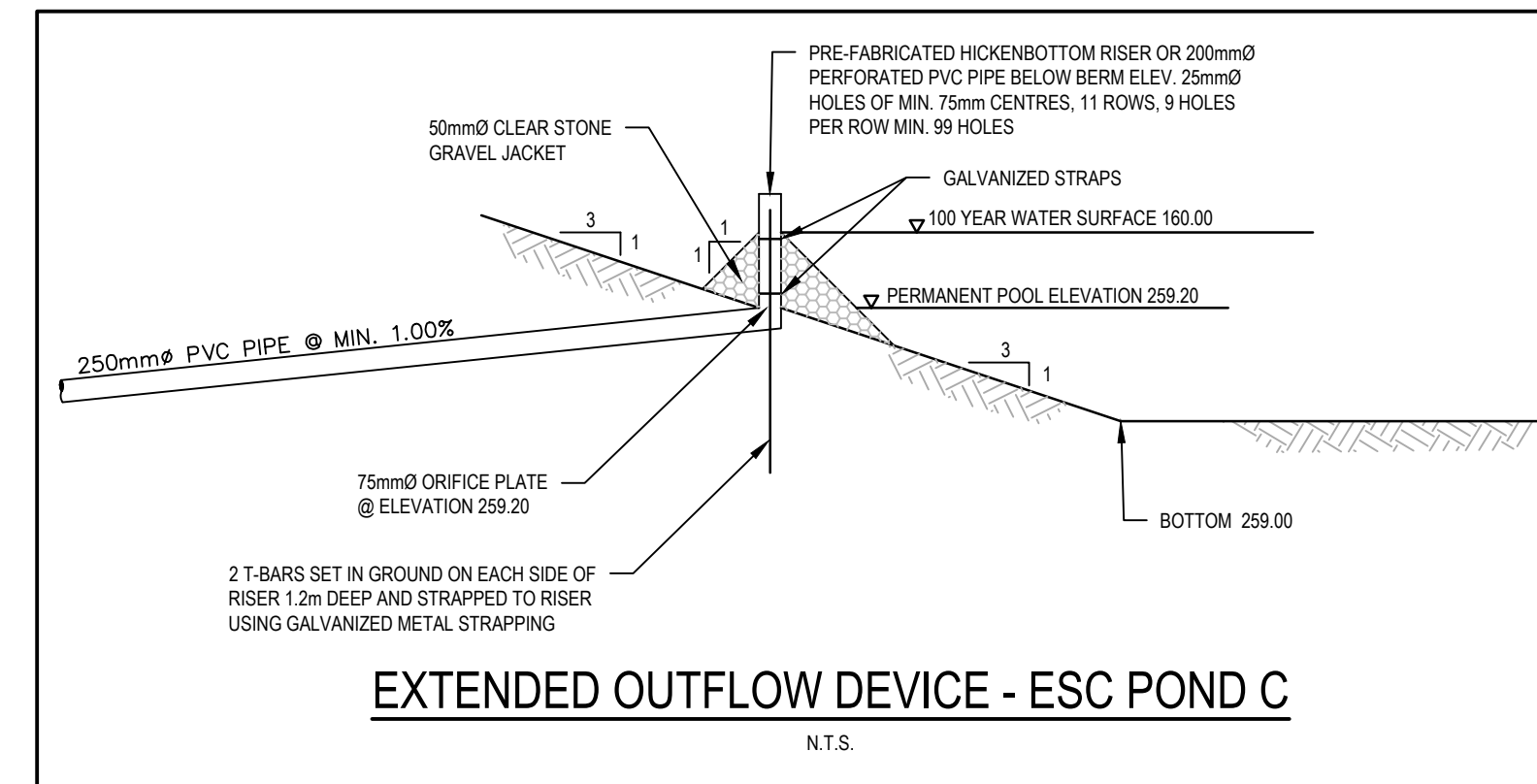
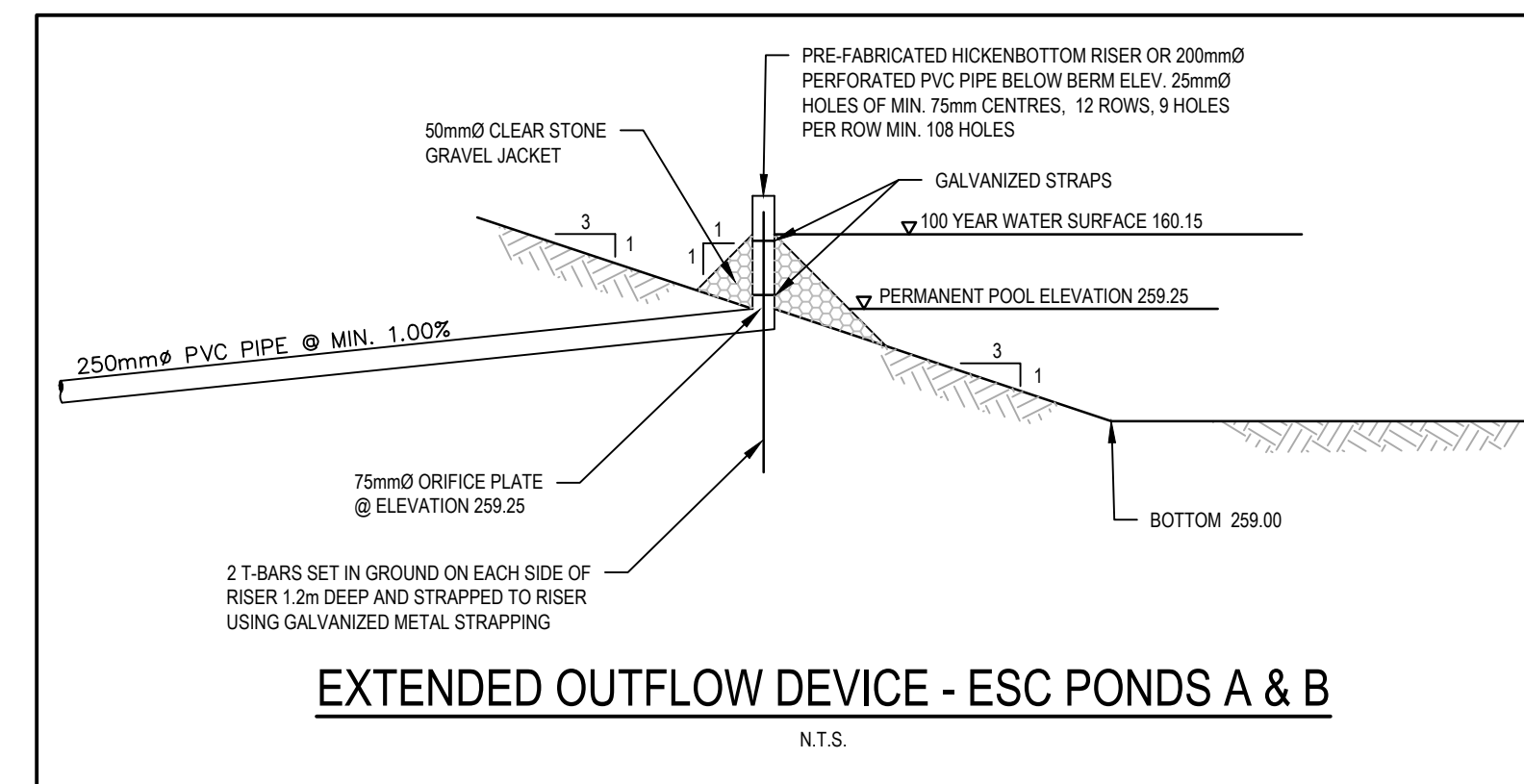
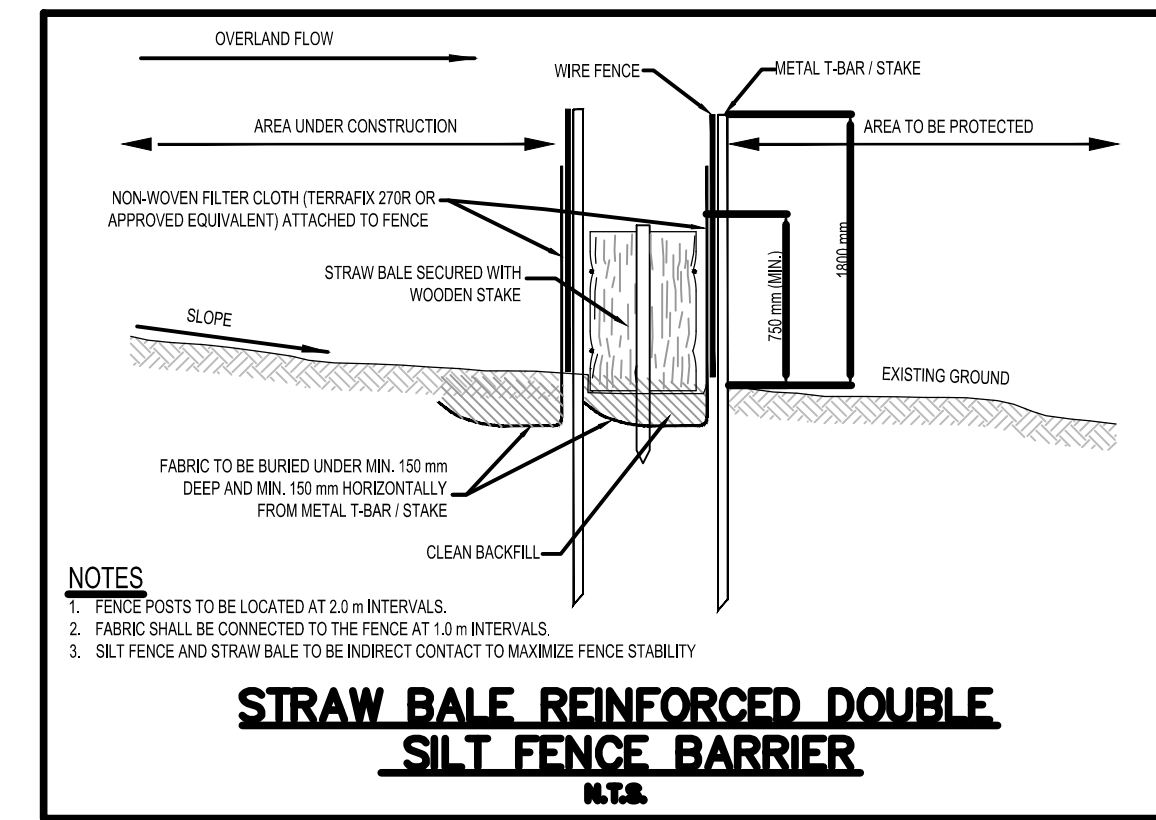
OPS-2
 Arch D
 Rev. B

REVISED GRADING TO MEET 600M3 IMPORT LIMIT



RIPARIAN SEED MIX

- TO BE INSTALLED ON ALL TOPSOILED AREAS.
- SEED AT A RATE OF 20.0 kg/ha.
- SPECIES INCLUDED AND APPROXIMATE VOLUME OF THE TOTAL BY WEIGHT:
 - 2% FOWL MANNA GRASS (*Cyperus setaceus*)
 - 30% FOWL BLUEGRASS (*Poa palustris*)
 - 30% FOX SEDGE (*Carex vulpinoidea*)
 - 8% PATH RUSH (*Luzula tenax*)
 - 30% VIRGINIA WILD RYE (*Elymus virginicus*)
- SIMULTANEOUSLY SOW COVER CROP OF ANNUAL OATS FOR EROSION CONTROL AT A RATE OF 30 kg/ha.

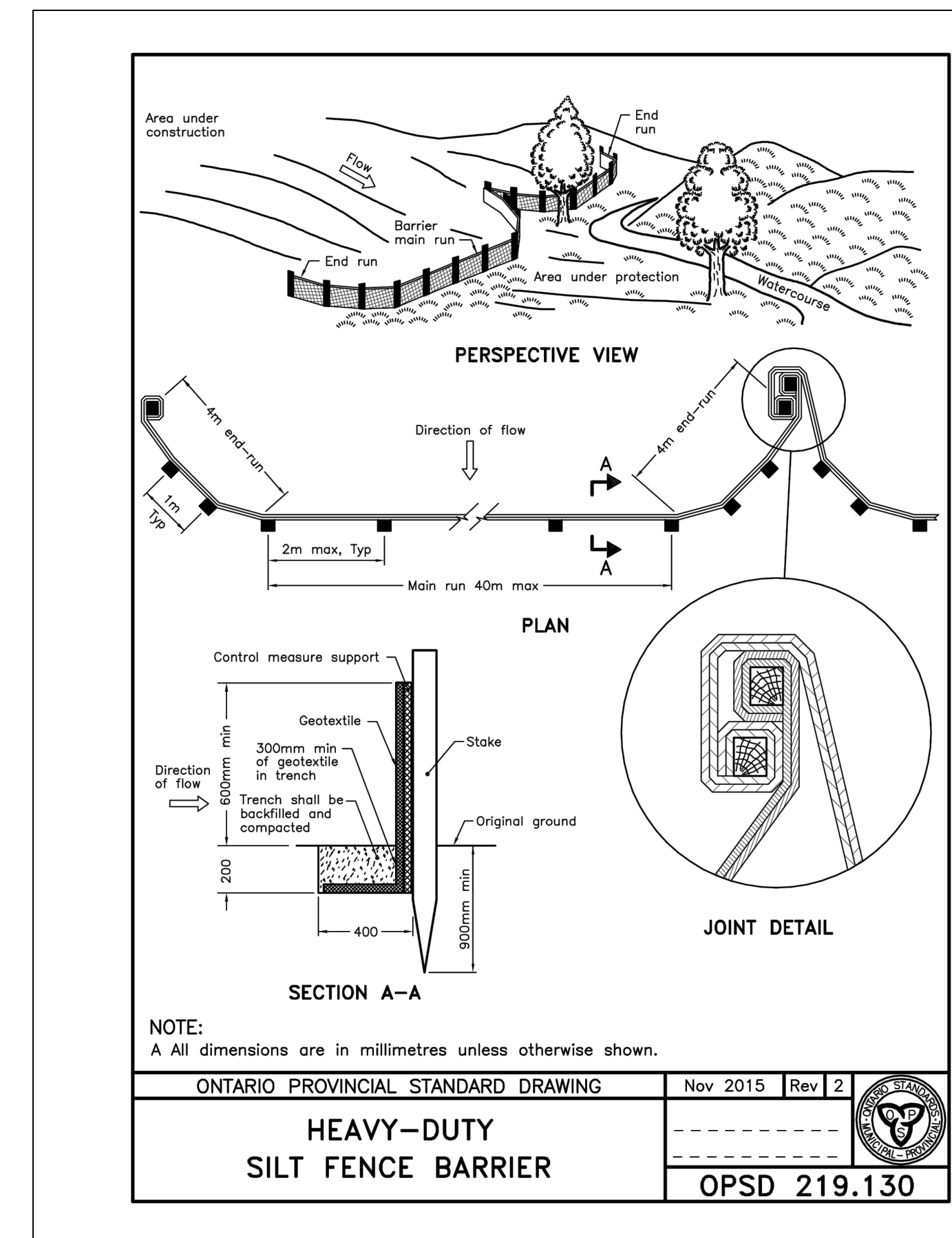


GENERAL NOTES

- MEASUREMENTS IN METRES AND/OR MILLIMETRES UNLESS OTHERWISE SHOWN.
- CONSTRUCTION ACCESS WILL BE AS SHOWN ON OPS-1, OPS-2, AND OPS-3 PLANS.
- THE PROJECT LEADER IS RESPONSIBLE FOR ENSURING THAT THE EROSION CONTROLS ARE MAINTAINED & OPERATING AS INTENDED, INCLUDING MAKING FIELD ADJUSTMENTS AS NECESSARY, TO THE SATISFACTION OF THE TOWN OF RICHMOND HILL TO ENSURE ADEQUATE EROSION PROTECTION.
- THE CONTRACTOR SHALL BE RESPONSIBLE FOR THE PROPER INSTALLATION, MAINTENANCE AND REMOVAL OF ALL TEMPORARY CONSTRUCTION, AS DIRECTED BY THE ENGINEER.
- THE LOCATION OF EROSION AND SEDIMENT CONTROL DETAILS ARE SHOWN SCHEMATICALLY ON THIS DRAWING.
- ADDITIONAL EROSION AND SEDIMENT CONTROL MEASURES MAY BE REQUIRED AND SHALL BE DETERMINED AS NECESSARY BY SITE CONDITIONS.
- SERVICING OF CONSTRUCTION EQUIPMENT ON SITE IN DESIGNATED AREAS ONLY

GOOD HOUSEKEEPING AND MAINTENANCE MEASURES

- NO CONSTRUCTION ACTIVITY OR MACHINERY SHALL GO BEYOND THE SILT/SNOW FENCE OR LIMITS. ALL VEHICLES SHALL LEAVE THE SITE AT DESIGNATED LOCATIONS AS SHOWN ON THE PLANS.
- CLEANING OF EXISTING ROAD(S) AT SITE ACCESS POINT SHALL BE DONE AS NECESSARY THROUGH REGULAR INSPECTION OR AS DIRECTED BY THE TOWN.
- STOCKPILES TO BE SEEDED IMMEDIATELY UPON COMPLETION TO STABILIZE AGAINST EROSION.
- CLEANING AND REPAIRS OF CHECK DAMS, MUD MATS AND ANY OTHER TEMPORARY SEDIMENT CONTROL MEASURES SHALL BE DONE PRIOR TO EVERY STORM EVENT THROUGH REGULAR INSPECTION.
- SEDIMENT/SILT SHALL BE REMOVED FROM THE SEDIMENT CONTROL DEVICES, AFTER STORM EVENTS AND DISPOSED OF IN AREAS AS APPROVED BY THE ENGINEER.
- DUST CONTROL TO BE REVIEWED DAILY. WATER TRUCK TO BE PROVIDED ON-SITE AND ALL HAUL ROADS/WORKING AREAS TO BE SPRAYED WITH WATER AS REQUIRED TO ENSURE DUST IS CONTROLLED ON-SITE.
- IN ADDITION WHILE THE FACILITY IS OPERATIONAL, SWEEPING AND FLUSHING WILL TAKE PLACE AS NEEDED PER THE FOLLOWING:
 - FRIDAY EVENINGS AFTER LAST TRUCK HAS LEFT THE SITE;
 - AFTER SIGNIFICANT RAINFALL EVENTS, UNTIL INTERNAL HAUL ROADS HAVE DRIED SUFFICIENTLY;
 - AFTER RECEIVING NOTIFICATIONS FROM THE TOWN OR REGION OF COMPLAINTS OF EXCESSIVE MUD FROM THIS SITE. COMPLAINTS RECEIVED OUTSIDE OF OPERATIONAL HOURS WILL BE ASSESSED AND ACTIONS APPLICABLE TO THE SITE COMPLETED ONCE THE SITE REOPENS.
- ALL LITTER AND DEBRIS SHALL BE MONITORED AND DISPOSED OF DAILY OR AS NECESSARY THROUGH REGULAR INSPECTION.
- TEMPORARY SEDIMENT PONDS TO BE INSPECTED AFTER STORM EVENTS AND CLEANED OF SEDIMENT EVERY SIX (6) MONTHS (MINIMUM).
- THE VEHICLE TRACKING PAD(S)/MUD MAT(S) MUST BE INSTALLED AT THE SITE ACCESS BEFORE ACTIVITIES BEGIN IN ORDER TO PREVENT MUD TRACKING ONTO ADJACENT ROADS.
- TEMPORARY SWALES TO TEMPORARY SEDIMENT CONTROL PONDS TO BE STABILIZED PRIOR TO USE.



ONTARIO PROVINCIAL STANDARD DRAWING	Nov 2015	Rev 2
HEAVY-DUTY SILT FENCE BARRIER	OPSD 219.130	

No.	Revision	Drawn	Job Manager	Project Director	Date
C	REVISED GRADING TO MEET 600M3 IMPORT LIMIT	A.S.	A.F.E.	A.F.E.	04/30/21
B	SECOND SUBMISSION	L.L.	A.F.E.	A.F.E.	08/07/19
A	FIRST SUBMISSION	L.L.	A.F.E.	A.F.E.	12/12/18

Drawing Revisions
 Note: * indicates signatures on original issue of drawing or last revision of drawing.
 GHD Inc.
 Conditions of Use: This document may only be used by GHD's client (and any other person who GHD has agreed can use this document) for the purpose for which it was prepared and must not be used by any other person or for any other purpose.



GHD
 140 Allstate Parkway, Suite 210
 Markham Ontario L3R 5Y8
 T 1 905 752 4300 F 1 905 752 4301
 E ytomall@ghd.com W www.ghd.com

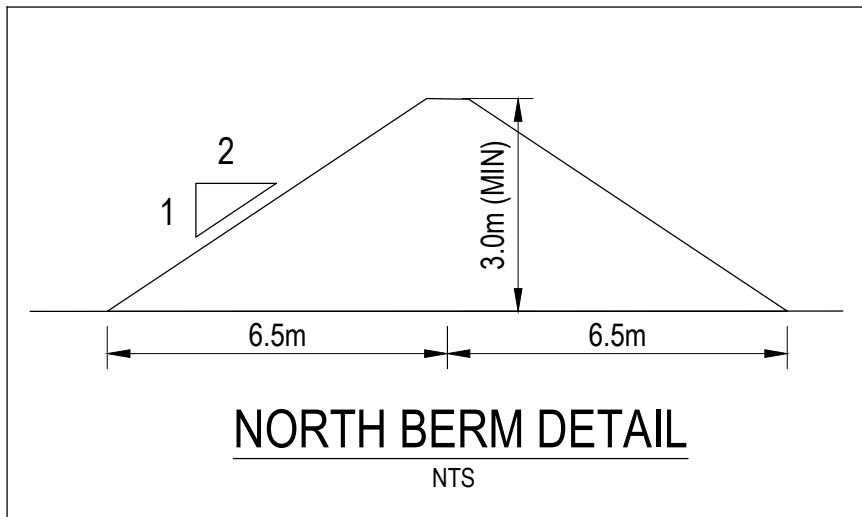
Client **RICE GROUP PTY LTD**
 Project **MCCOWAN & MILL ROAD**

Title **NOTES AND DETAILS**

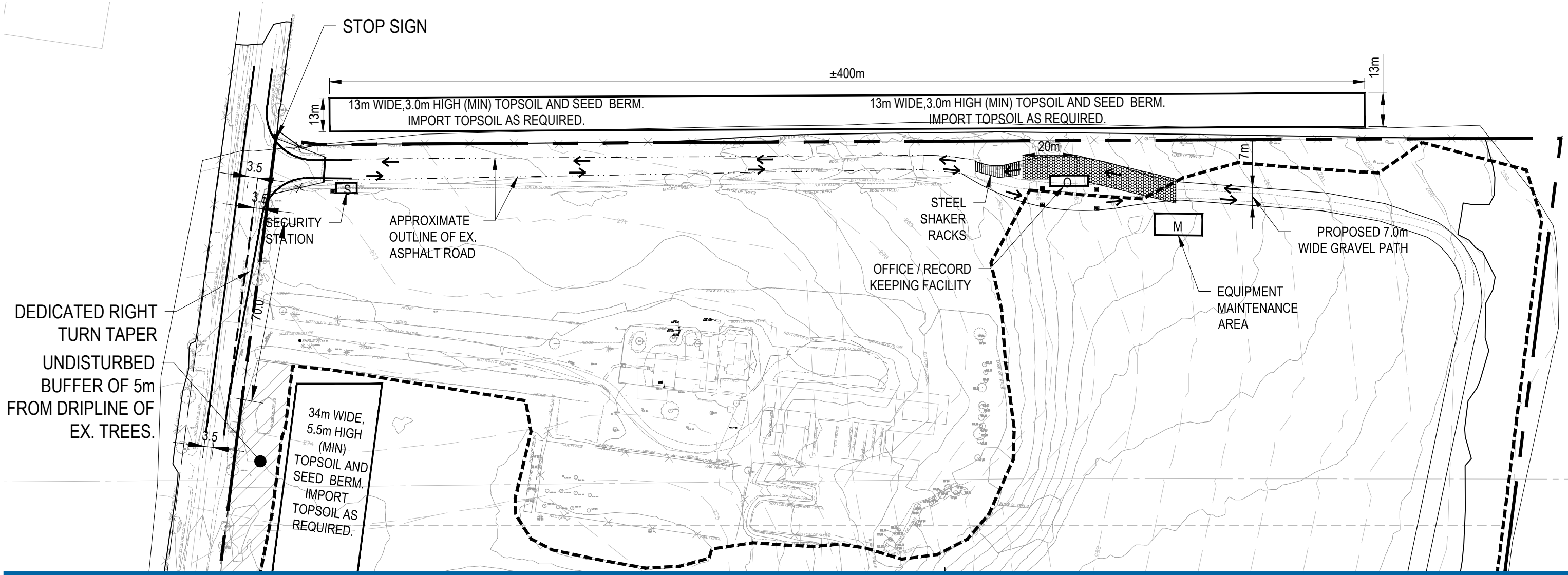
Scale	1:1000	DO NOT SCALE
Drawn	L. LI	
Designer	L. LI	
Drafting Check	L. LI	
Design Check	A. EMER	
Approved (Project Director)	A. EMER	
Date	DEC 2018	

This Drawing must not be used for Construction unless signed as Approved
 Drawing No. **DET-1** Original Size **Arch D**
 Rev. **B**

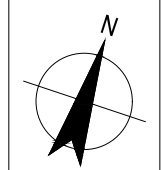
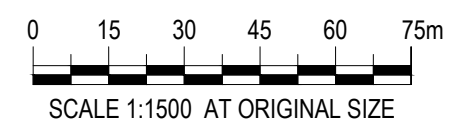
REVISED GRADING TO MEET 600M3 IMPORT LIMIT



LOT 9



DEDICATED RIGHT TURN TAPER
UNDISTURBED BUFFER OF 5m FROM DRIPLINE OF EX. TREES.



RICE GROUP PTY LTD
MCCOWAN & MILL ROAD
**PROPOSED NORTH 3m
HEIGHT BERM**

Job Number | 11139891
Revision | A
Date | MARCH 2020
Figure 01



No.	Revision	Drawn	Job Manager	Project Director	Date	
A	FIRST SUBMISSION		J.C.	A.F.E.	A.F.E.	12/12/18

Drawing Revisions
 Note: * indicates signatures on original issue of drawing or last revision of drawing
 GHD Inc.
 Conditions of Use: This document may only be used by GHD's client (and any other person who GHD has agreed can use this document) for the purpose for which it was prepared and must not be used by any other person or for any other purpose.



140 Allstate Parkway, Suite 210
 Markham Ontario L3R 5Y8
 T 1 905 752 4300 F 1 905 752 4301
 E ytomall@ghd.com W www.ghd.com

Client **RICE GROUP PTY LTD**

Project **MCCOWAN & MILL ROAD**

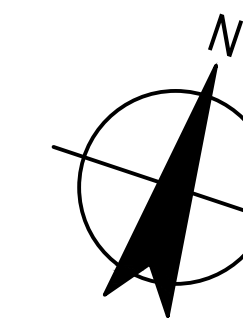
Title **TREE PROTECTION PLAN**

Scale 1:1000 **DO NOT SCALE**

Drawn
 Designer
 Drafting Check
 Design Check
 Approved (Project Director)
 Date

This Drawing must not be used for Construction unless signed as Approved
 Drawing No. **TP-1** Original Size **Arch D**
 Rev. **A**

FIRST SUBMISSION



LEGEND:

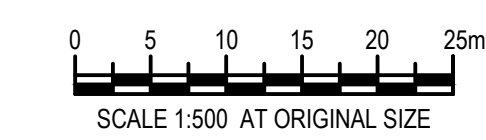
- CONTOURS - CURRENT SURFACE
- CONTOURS - ORIGINAL SURFACE (1983)
- EDGE OF EXISTING TREES
- LIMIT OF WORK
- POLE MOUNTED SECURITY CAMERA
- LIMIT OF GRADING WORK
- MUD MAT
- TREE REMOVAL
- PROPOSED TREE PROTECTION FENCE
- EXISTING CONIFEROUS TREE
- EXISTING DECIDUOUS TREE



A	FIRST SUBMISSION	J.C.	A.F.E.	A.F.E.	12/12/18
No.	Revision	Drawn	Job Manager	Project Director	Date

Drawing Revisions
Note: * indicates signatures on original issue of drawing or last revision of drawing

GHD Inc.
Conditions of Use: This document may only be used by GHD's client (and any other person who GHD has agreed can use this document) for the purpose for which it was prepared and must not be used by any other person or for any other purpose.



140 Allstate Parkway, Suite 210
Markham Ontario L3R 5Y8
T 1 905 752 4300 F 1 905 752 4301
E ytomall@ghd.com W www.ghd.com

Client **RICE GROUP PTY LTD**

Project **MCCOWAN & MILL ROAD**

Title **TREE PROTECTION PLAN**

Scale	1:500	DO NOT SCALE
Drawn		
Designer		
Drafting Check		
Design Check		
Approved (Project Director)		
Date		

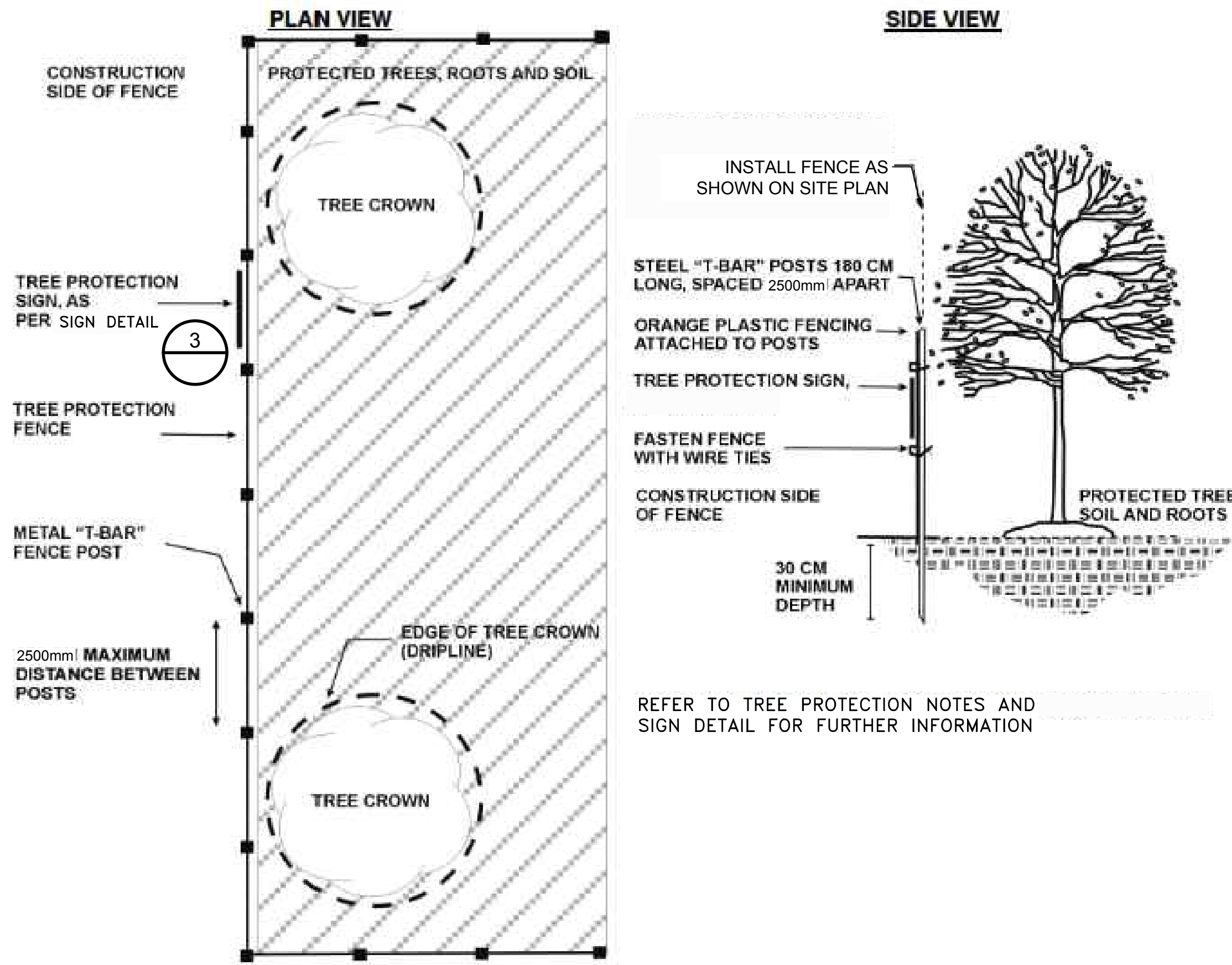
This Drawing must not be used for Construction unless signed as Approved Original Size

Drawing No.	TP-2	Arch D
Rev.	A	

FIRST SUBMISSION

Tree #	Common Name	Scientific Name	DBH (cm)	Proposed Removal (x)
47	Scots pine	<i>Pinus sylvestris</i>	21	
61	Scots pine	<i>Pinus sylvestris</i>	20	
62	Scots pine	<i>Pinus sylvestris</i>	32	
63	Scots pine	<i>Pinus sylvestris</i>	30	
64	Scots pine	<i>Pinus sylvestris</i>	28	
65	Scots pine	<i>Pinus sylvestris</i>	28	
66	Manitoba maple	<i>Acer negundo</i>	21.0	
67	Manitoba maple	<i>Acer negundo</i>	23.5	
68	Manitoba maple	<i>Acer negundo</i>	70, 44.5	
69	Manitoba maple	<i>Acer negundo</i>	20.5	
70	Manitoba maple	<i>Acer negundo</i>	24.0	
72	Manitoba maple	<i>Acer negundo</i>	20, 20, 21, 15.5, 14, 16	
73	Manitoba maple	<i>Acer negundo</i>	20.5	x
74	Manitoba maple	<i>Acer negundo</i>	22.0	
75	Manitoba maple	<i>Acer negundo</i>	28.0	
76	Manitoba maple	<i>Acer negundo</i>	24.5	
77	Manitoba maple	<i>Acer negundo</i>	16, 20.5	
78	Manitoba maple	<i>Acer negundo</i>	24, 14, 20, 26	
79	Manitoba maple	<i>Acer negundo</i>	22, 22.5, 19, 20, 22.5	
80	Manitoba maple	<i>Acer negundo</i>	45, 35	
81	Manitoba maple	<i>Acer negundo</i>	22	
83	Manitoba maple	<i>Acer negundo</i>	50, 14.5	
84	Manitoba maple	<i>Acer negundo</i>	69	
85	Manitoba maple	<i>Acer negundo</i>	31	
86	Manitoba maple	<i>Acer negundo</i>	42.0	
87	Manitoba maple	<i>Acer negundo</i>	44.0	
88	Manitoba maple	<i>Acer negundo</i>	42.5	
89	Manitoba maple	<i>Acer negundo</i>	71.0	
90	Manitoba maple	<i>Acer negundo</i>	22.5, 22, 13	
91	Manitoba maple	<i>Acer negundo</i>	40.0	
92	Manitoba maple	<i>Acer negundo</i>	37, 36	
93	Manitoba maple	<i>Acer negundo</i>	55, 32	
94	Manitoba maple	<i>Acer negundo</i>	44.5	
95	Manitoba maple	<i>Acer negundo</i>	37, 24	
96	Manitoba maple	<i>Acer negundo</i>	21, 5, 7, 7, 10, 10	
97	Manitoba maple	<i>Acer negundo</i>	33, 30.05, 31	
98	Manitoba maple	<i>Acer negundo</i>	26, 17.5	
99	Manitoba maple	<i>Acer negundo</i>	25.5	
100	Manitoba maple	<i>Acer negundo</i>	43, 39.5	Potential removal Retain, as possible
1389	European mountain-ash	<i>Sorbus aucuparia</i>	24	

DETAIL 1 TREE INVENTORY TABLE OF SELECT TREES
N.T.S.



DETAIL 2 TREE PROTECTION
N.T.S.

TREE PROTECTION SIGN



TREE PROTECTION NOTES

- FENCE MATERIAL:**
- PLASTIC ORANGE FENCING (120 CM TALL) SHALL BE USED OR EQUIVALENT AS APPROVED BY YORK REGION AND INSTALLED WITH WIRE TIES ON METAL T-BAR POSTS (180 CM TALL) SPACED 2500mm APART
 - FENCE MAY BE COMBINED WITH SILT FENCING
- FENCE LOCATION:**
- INSTALL FENCE AS PER TREE PROTECTION DETAIL
 - FOR INDIVIDUAL TREES, FENCE IS TO BE INSTALLED AT THE LIMITS OF CONSTRUCTION OR AT THE DRIPLINE OF THE TREE, WHICHEVER IS FURTHER FROM THE TREE. FENCE CAN BE LOCATED CLOSER TO THE TRUNK ONLY WITH AUTHORIZATION FROM YORK REGION
 - FOR ROWS OF TREES, SUCH AS FOUND IN BOULEVARDS, A SINGLE LINEAR FENCE SHOULD BE INSTALLED WHICH FOLLOWS THE LIMITS OF THE CONSTRUCTION ZONE
- SIGNAGE:**
- INSTALL TREE PROTECTION SIGN ON FENCE FACING CONSTRUCTION ZONE AT 100 METER INTERVALS AS PER NHFS-04 TREE PROTECTION DETAIL
- PRUNING:**
- ALL ROOTS WHICH ARE EXPOSED THROUGH EXCAVATION ARE TO BE PRUNED BACK TO THE SOIL SURFACE
 - BRANCHES DAMAGED OR INTERFERING WITH CONSTRUCTION ACTIVITIES ARE TO BE PRUNED BY AN INTERNATIONAL SOCIETY OF ARBORICULTURE (ISA) CERTIFIED ARBORIST
- FENCE MAINTENANCE:**
- MAINTAIN FENCE IN WORKING CONDITION AT ALL TIMES
 - DO NOT STORE MATERIALS OR EQUIPMENT IN THE PROTECTED AREA
 - DO NOT MOVE FENCE WITHOUT PRIOR AUTHORIZATION FROM YORK REGION
- MONITORING:**
- CONDUCT WEEKLY MONITORING OF FENCE AND TREE HEALTH THROUGHOUT THE DURATION OF THE CONSTRUCTION PROJECT OR ACCORDING TO A SCHEDULE NOTED IN AN APPROVED TREE PRESERVATION PLAN

DETAIL 3 TREE PROTECTION AND SIGN DETAIL
N.T.S.

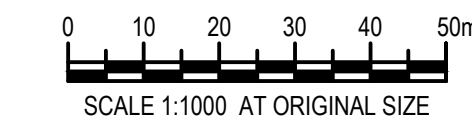
TREE REMOVAL AND TREE PROTECTION NOTES:

- ALL WOOD CHIPS/BRUSHWOOD FROM REMOVED SITE TREES TO BE REMOVED FROM SITE OR PLACED AS DIRECTED BY THE OWNER/ENGINEER.
- TREE BRANCHES DAMAGED DURING CONSTRUCTION OR ADJACENT TREE REMOVAL ACTIVITIES TO BE PRUNED BY COMPETENT ARBORISTS IN ACCORDANCE WITH CURRENT ARBORICULTURAL PRINCIPLES AND BEST MANAGEMENT PRACTICES.
- ALL TREE PROTECTION FENCE TO BE IN ACCORDANCE WITH DETAIL 2 (TREE PROTECTION DETAIL) AND DETAIL 3 (TREE PROTECTION NOTES AND SIGN DETAIL).
- TREE PROTECTION MEASURES TO BE LEFT IN PLACE AND MAINTAINED FOR THE DURATION OF CONSTRUCTION ACTIVITIES. TREE PROTECTION FENCE SHOULD BE INSPECTED ON A WEEKLY BASIS FOR THE DURATION OF THE CONSTRUCTION PHASE. TREE PROTECTION MEASURE TO BE REMOVED ONLY WHEN DIRECTED BY THE OWNER/ENGINEER.
- TREE PROTECTION MEASURES TO BE REPAIRED AND/OR REPLACED IMMEDIATELY WHEN DAMAGED.
- ANY TREES NOT INVENTORIED ARE TO BE PROTECTED BY A MINIMUM 5 METRE OFF-SET FROM THE EDGE OF THE TREE CROWN (DRIPLINE). IF WORKS ARE NEEDED WITHIN 5 METRES OF A NON-INVENTORIED TREE, PROTECTION MEASURES WILL BE RECEIVED BY AN ARBORIST.
- NO EQUIPMENT, VEHICLES, OR MATERIAL SHALL BE PILED, PLACED, OR STORED IN TREE PROTECTION AREAS OR AREAS BEYOND TREE PROTECTION FENCE.

A	FIRST SUBMISSION	J.C.	A.F.E.	A.F.E.	12/12/18
No.	Revision	Drawn	Job Manager	Project Director	Date

Drawing Revisions
Note: * indicates signatures on original issue of drawing or last revision of drawing

GHD Inc.
Conditions of Use: This document may only be used by GHD's client (and any other person who GHD has agreed can use this document) for the purpose for which it was prepared and must not be used by any other person or for any other purpose.



140 Allstate Parkway, Suite 210
Markham Ontario L3R 5Y8
T 1 905 752 4300 F 1 905 752 4301
E ytomail@ghd.com W www.ghd.com

Client **RICE GROUP PTY LTD**

Project **MCCOWAN & MILL ROAD**

Title **DETAILS AND NOTES**

Scale N.T.S. **DO NOT SCALE**

Drawn
Designer
Drafting Check
Design Check
Approved (Project Director)
Date

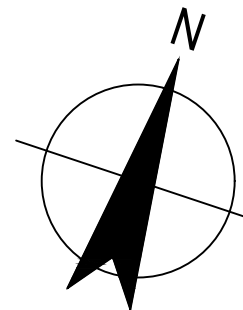
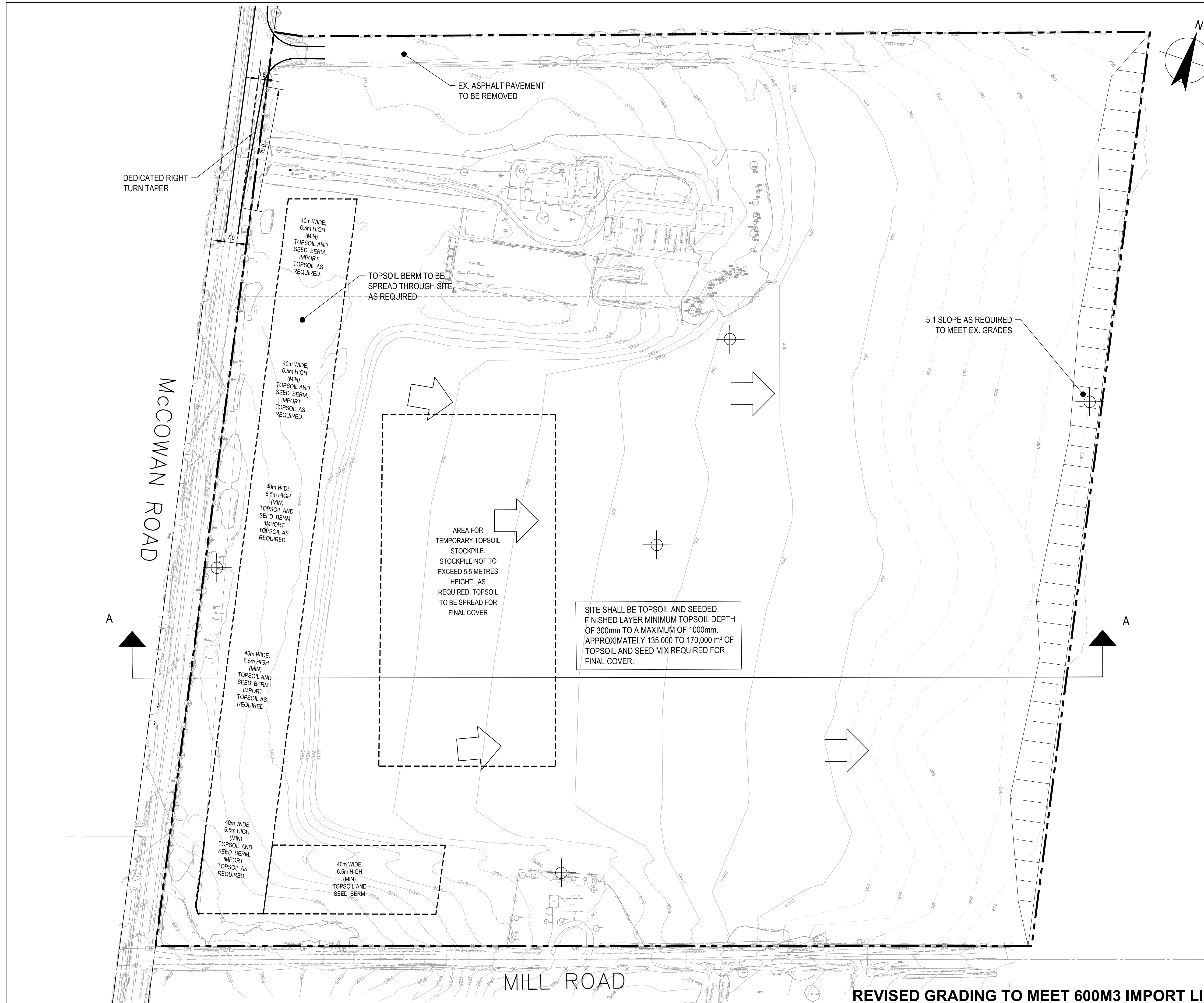
This Drawing must not be used for Construction unless signed as Approved

Drawing No. **TP-3** Original Size

Arch D

Rev. **A**

FIRST SUBMISSION



LEGEND:

- EXISTING CONTOURS TO REMAIN
- - - FINAL CONTOURS OF REGRADED AREAS (BASED ON 1983 ORIGINAL GROUND)
- - - EDGE OF EXISTING TREES
- - - LIMIT OF SITE
- ➔ OVERLAND SURFACE FLOW DIRECTION
- EX. MONITORING WELL

No.	Revision	Drawn	Job Manager	Project Director	Date
C	REVISED GRADING TO MEET 600M3 IMPORT LIMIT	A.S.	L.L.	A.F.E.	04/30/21
B	SECOND SUBMISSION	L.L.	A.F.E.	A.F.E.	08/07/19
A	FIRST SUBMISSION	L.L.	A.F.E.	A.F.E.	12/12/18

Drawing Revisions
 Note: * indicates signatures on original issue of drawing or last revision of drawing

GHD Inc.
 Conditions of Use: This document may only be used by GHD's client (and any other person who GHD has agreed can use this document) for the purpose for which it was prepared and must not be used by any other person or for any other purpose.



140 Allstate Parkway, Suite 210
 Markham Ontario L3R 5Y8
 T 1 905 752 4300 F 1 905 752 4301
 E ytomall@ghd.com W www.ghd.com

Client **RICE GROUP PTY LTD**

Project **MCCOWAN & MILL RD**

Title **SITE OPERATIONS AND ENVIRONMENTAL CONTROLS (STAGE 3)**

Scale	1:1000	DO NOT SCALE
Drawn	L. LI	
Designer	L. LI	
Drafting Check	A. EMER	
Design Check	A. EMER	
Approved (Project Director)	A. EMER	
Date	DEC 2018	

This Drawing must not be used for Construction unless signed as Approved
 Drawing No. **CL-2** Original Size **Arch D**

Rev. **B**