

# TOWN OF EAST GWILLIMBURY HEALTH & ACTIVE LIVING PLAZA



Town of  
East Gwillimbury



COMMUNITY  
PARKS, RECREATION  
& CULTURE  
Active By Nature



EAST GWILLIMBURY  
Public Library

MJMA

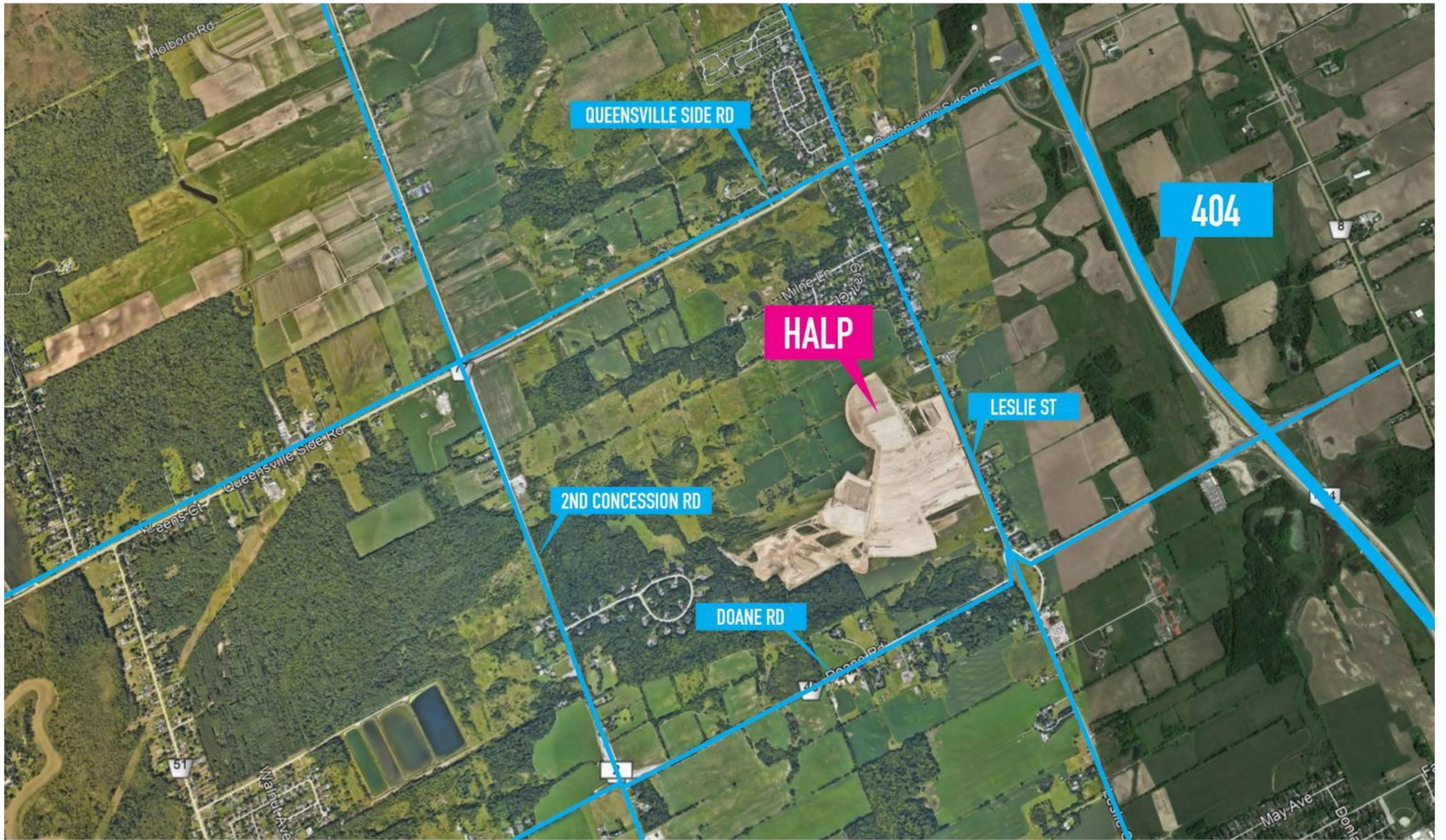


## **MEETING AGENDA - MAY 12, 2020:**

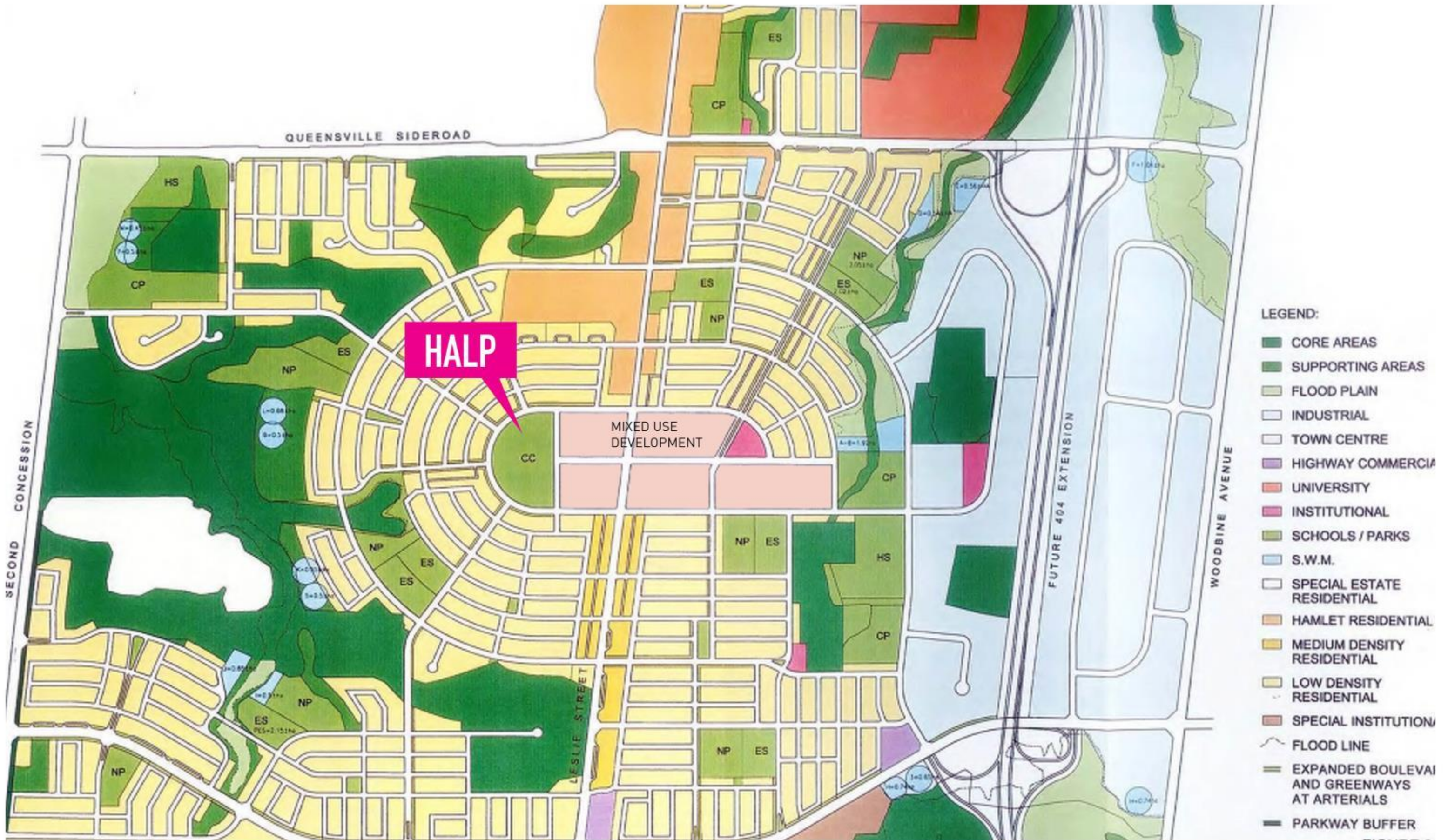
- 1) HALP DESIGN JOURNEY - COMMUNITY AS DESIGN COMMITTEE**
- 2) DESIGN COLLABORATION - HALP AND QUEENSVILLE TOWN CENTRE**
- 3) MASSING DEVELOPMENT - HALP TAKING SHAPE**
- 4) CAPITAL AND OPERATING FINANCIAL PLANNING**
- 5) THE WAY FORWARD**

# HALP DESIGN JOURNEY COMMUNITY AS DESIGN COMMITTEE











**COMMUNITY  
AS  
DESIGN  
COMMITTEE**



# HELP DESIGN THE HALP



MAKER  
STUDIO

*Recording  
Studio*



LIBRARY

*Quiet  
study  
area*



AQUATICS  
CENTRE



CHANGE  
ROOMS

*Family  
Change  
Room*



HALP



GYMNASIUM



FLEXIBLE  
PROGRAM  
SPACE

*Access to  
an outdoor  
kitchen*



INDOOR  
PLAYGROUND



INTERIOR  
PUBLIC  
SPACE



CAFE

*Healthy  
snack  
options*





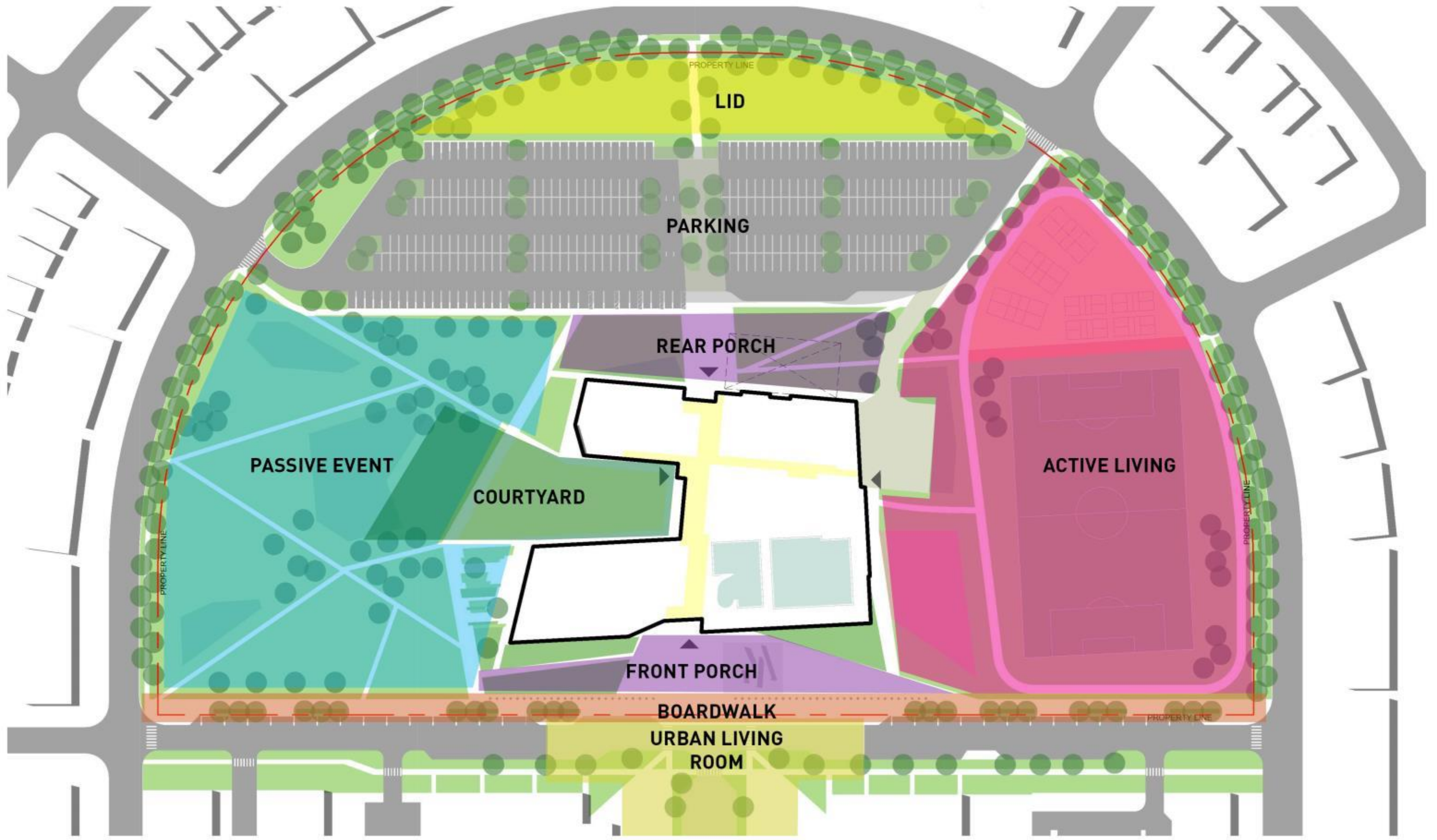




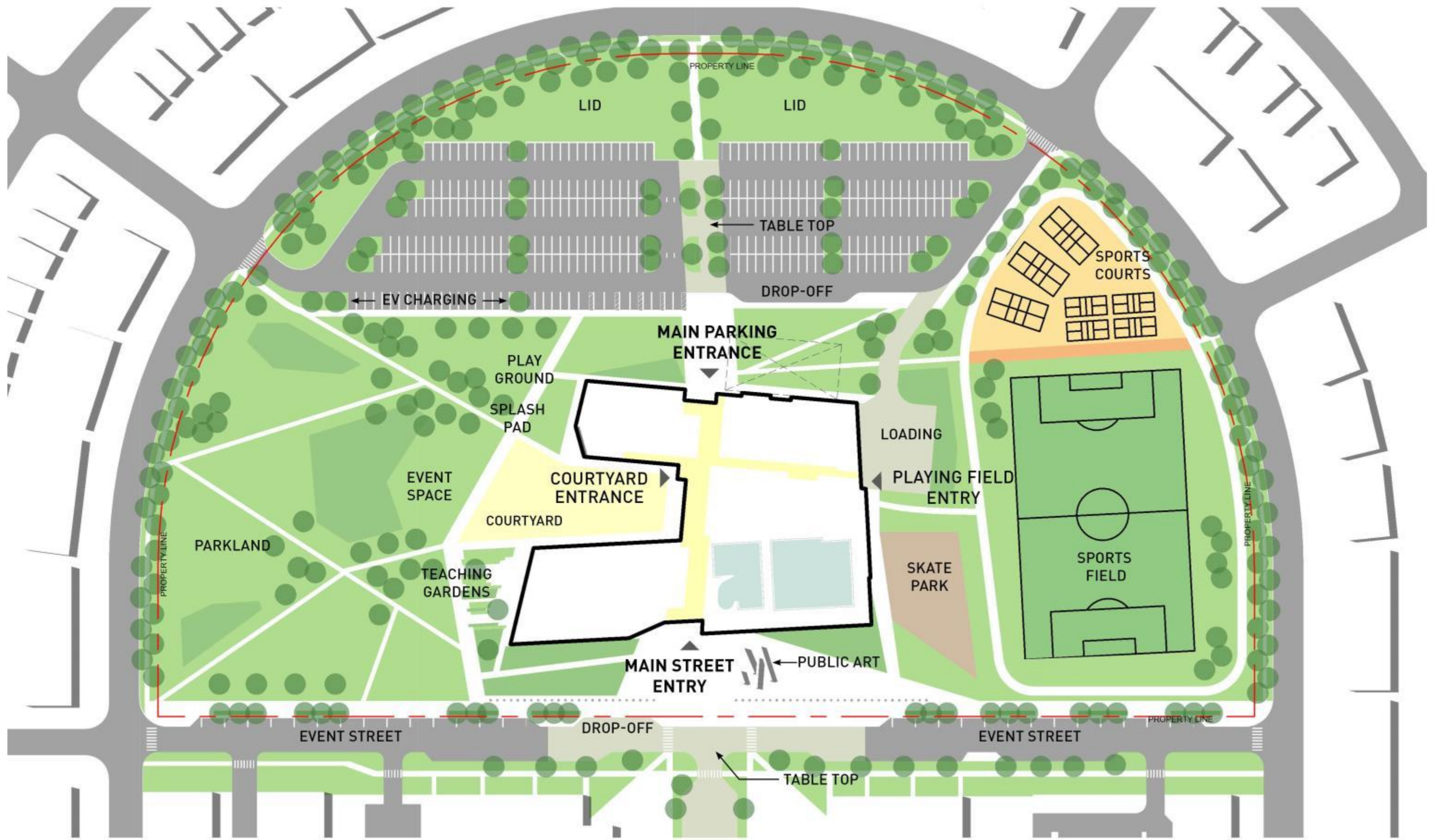
15,000 SF = LIBRARY  
 27,000 SF = AQUATIC CENTRE  
 20,000 SF = GYM, POTENTIAL FITNESS, PLAYSACE  
 4,000 SF = PROGRAM + PERMIT SPACE  
 14,000 SF = ADMINISTRATION + COMMON SPACE

**80,000 SF = PROJECT GROSS AREA**

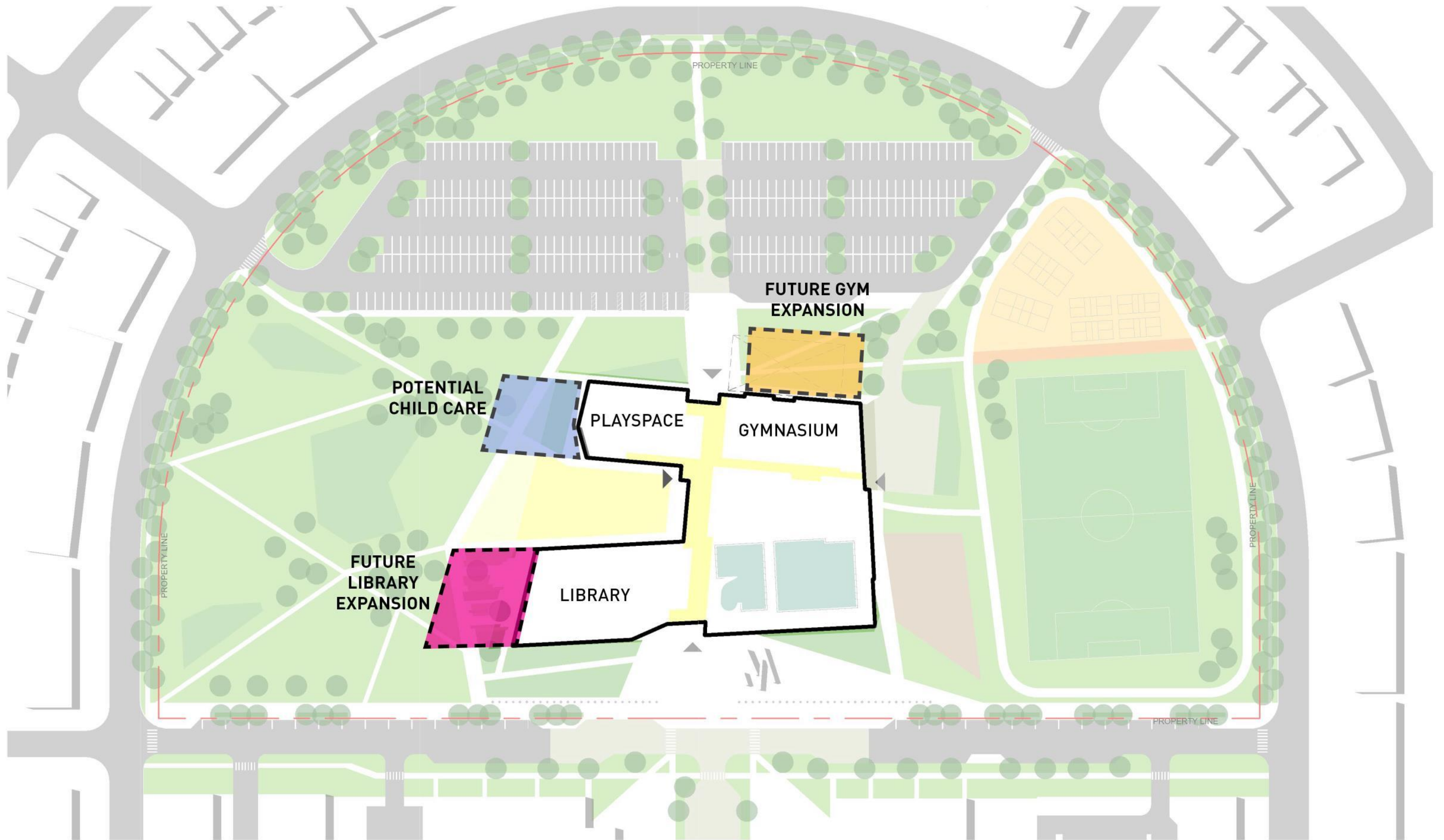




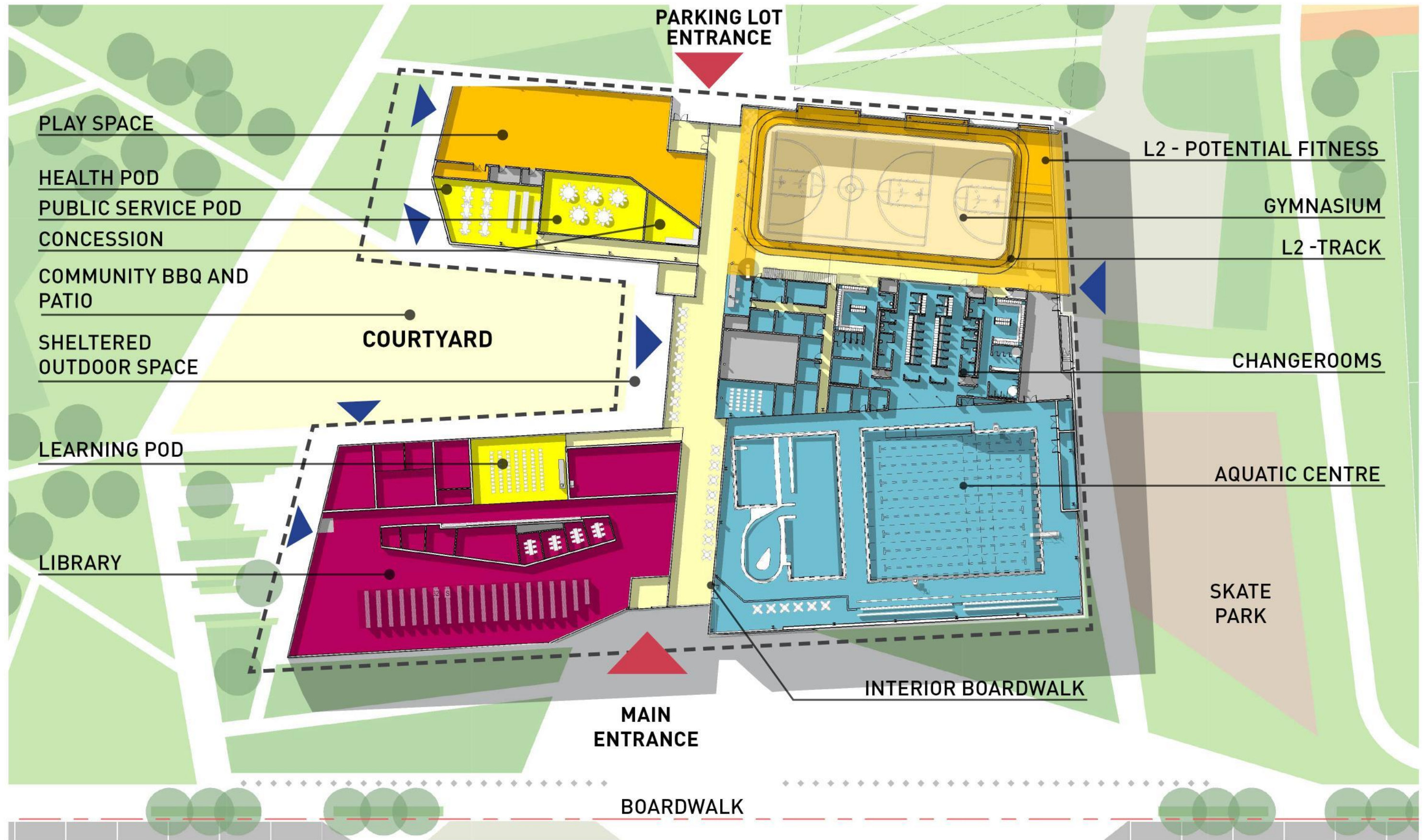














**DESIGN COLLABORATION  
HALP AND QUEENSVILLE TOWN CENTRE**



# QUEENSVILLE DEVELOPMENT

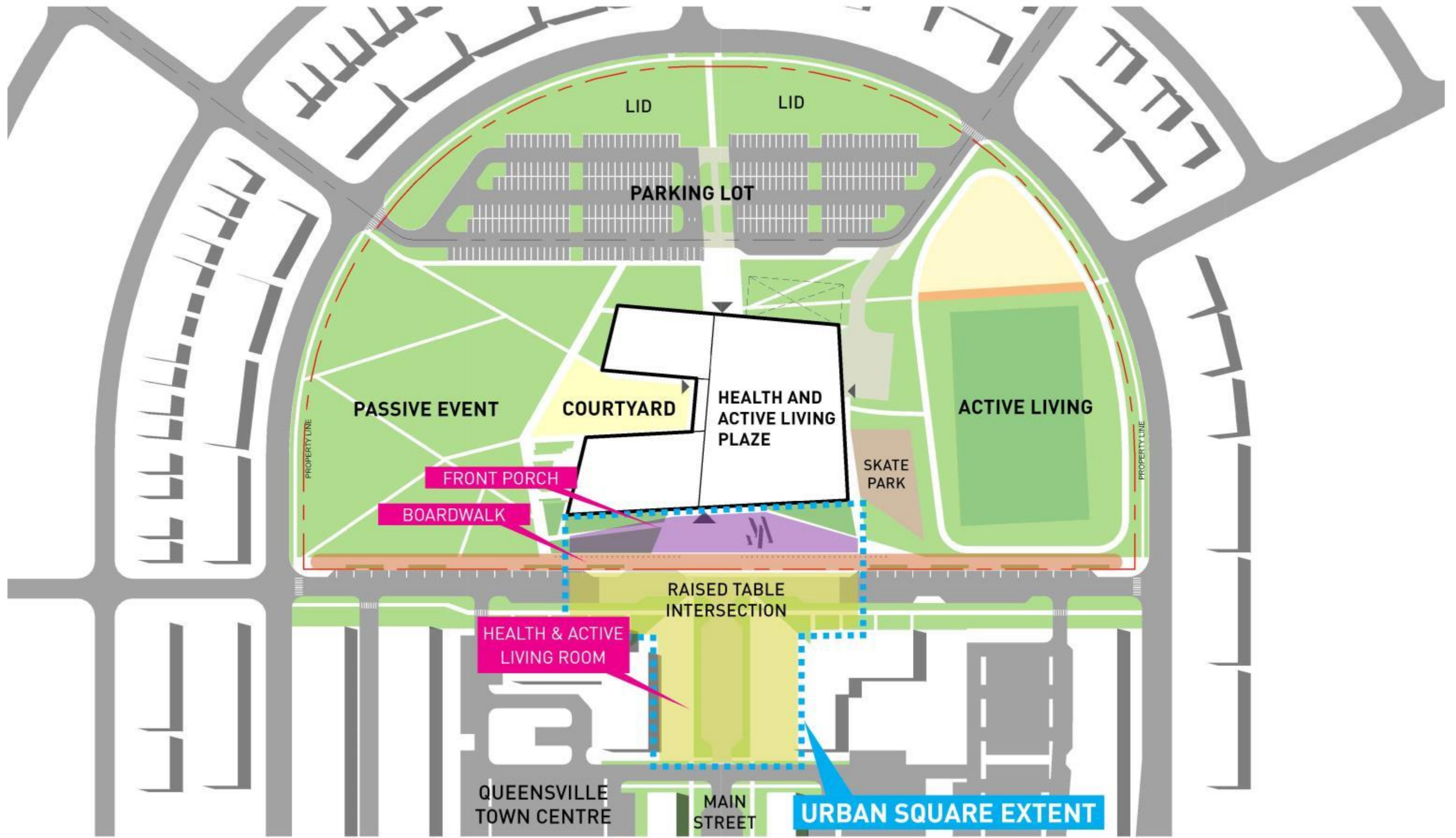




# INTEGRATING THE CENTRE









**FRONT PORCH**



INTERACTIVE AREAS



DISTINCT PROGRAM ZONES



POTENTIAL SKATING & WATER FEATURE

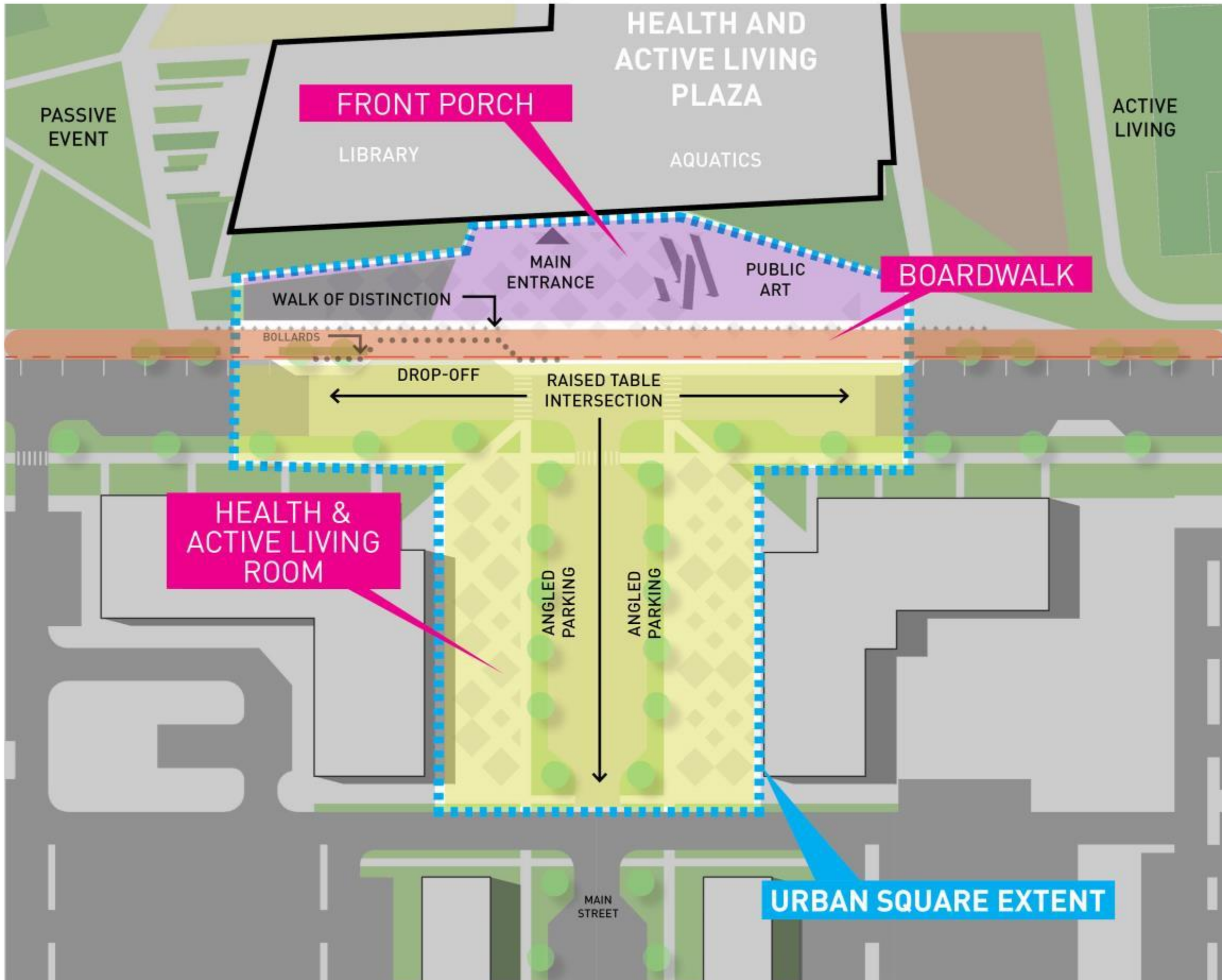
**BOARDWALK**



WALK OF DISTINCTION



MODERN FURNITURE AND PLANTS



**HEALTH & ACTIVE LIVING ROOM**



WIFI AND CHARGING STATIONS



LIVING WALL AND PUBLIC ART



SEASONAL LIGHTING



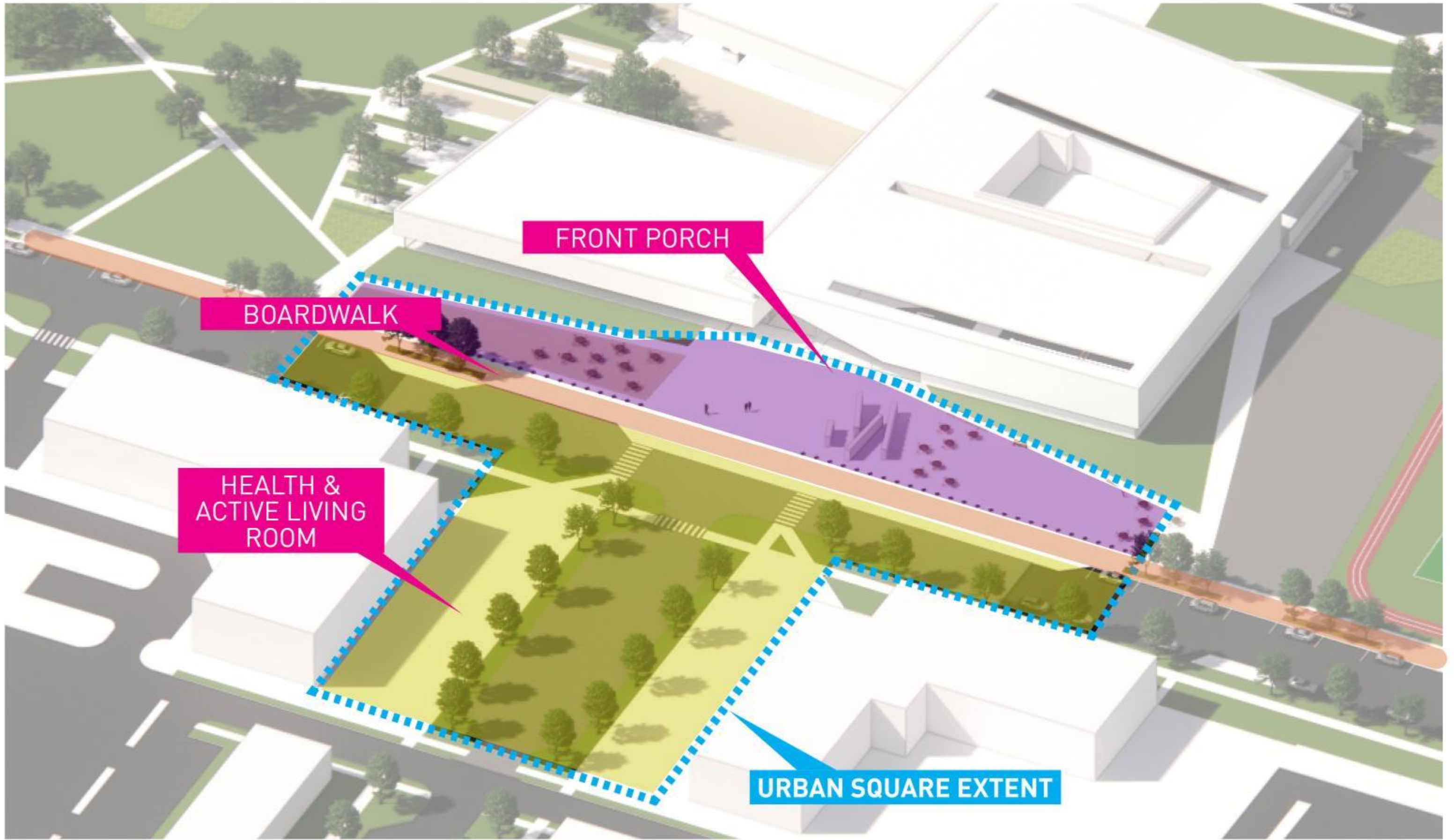
LARGE SCALE DISPLAY SCREEN



PUBLIC GATHERING SPACE





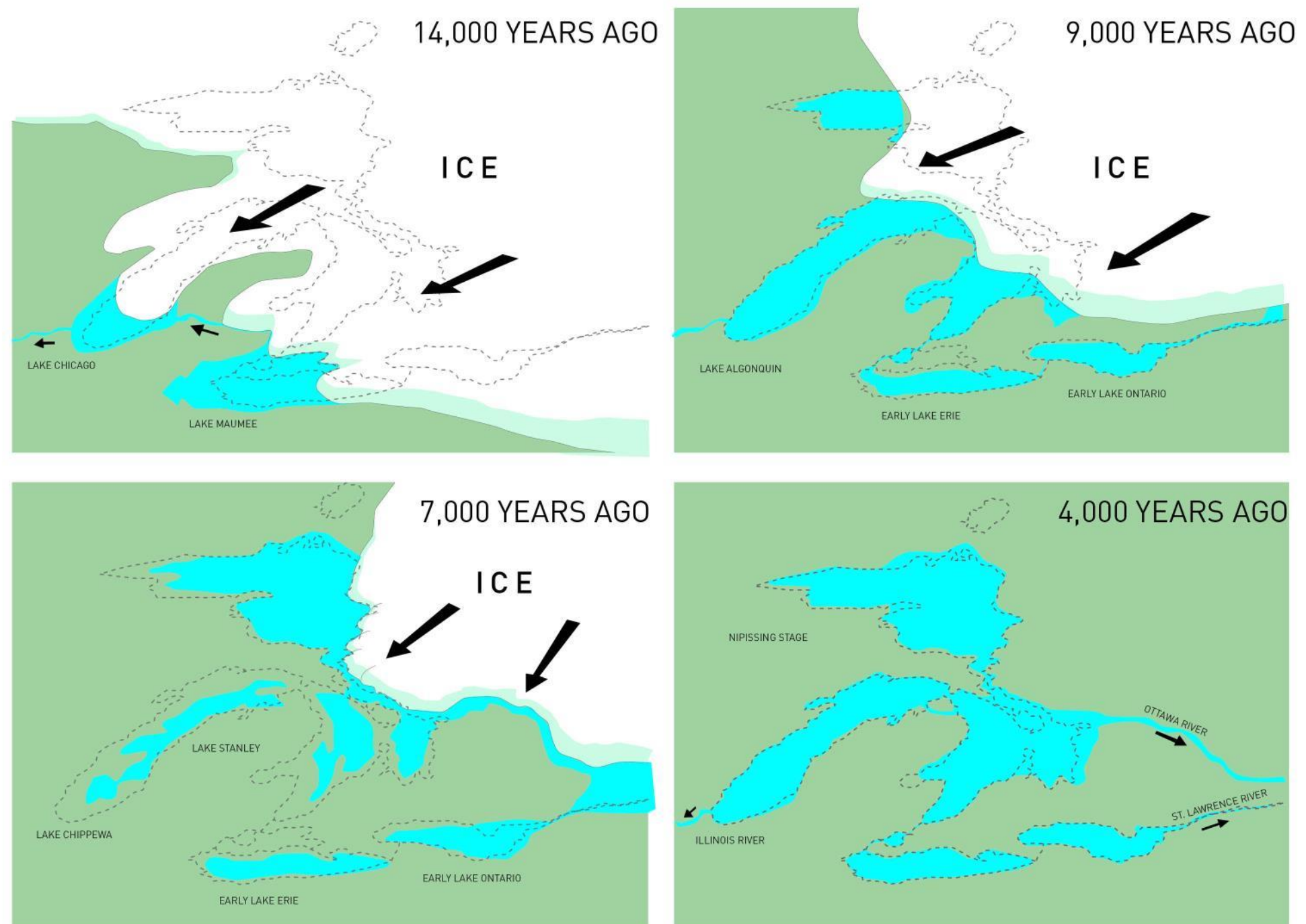




# MASSING DEVELOPMENT HALP TAKING SHAPE

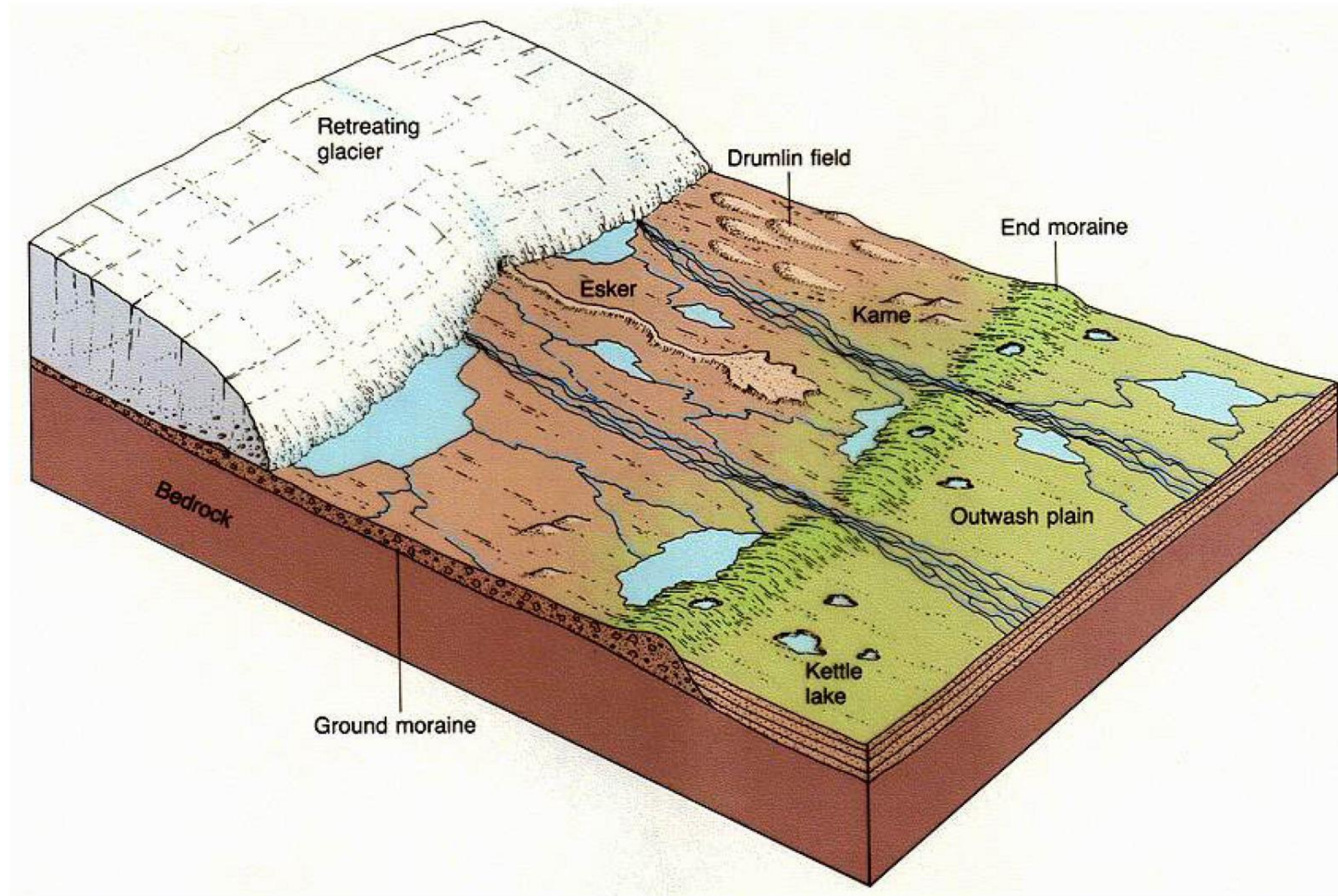


# GLACIAL MOVEMENT IN SOUTHERN ONTARIO

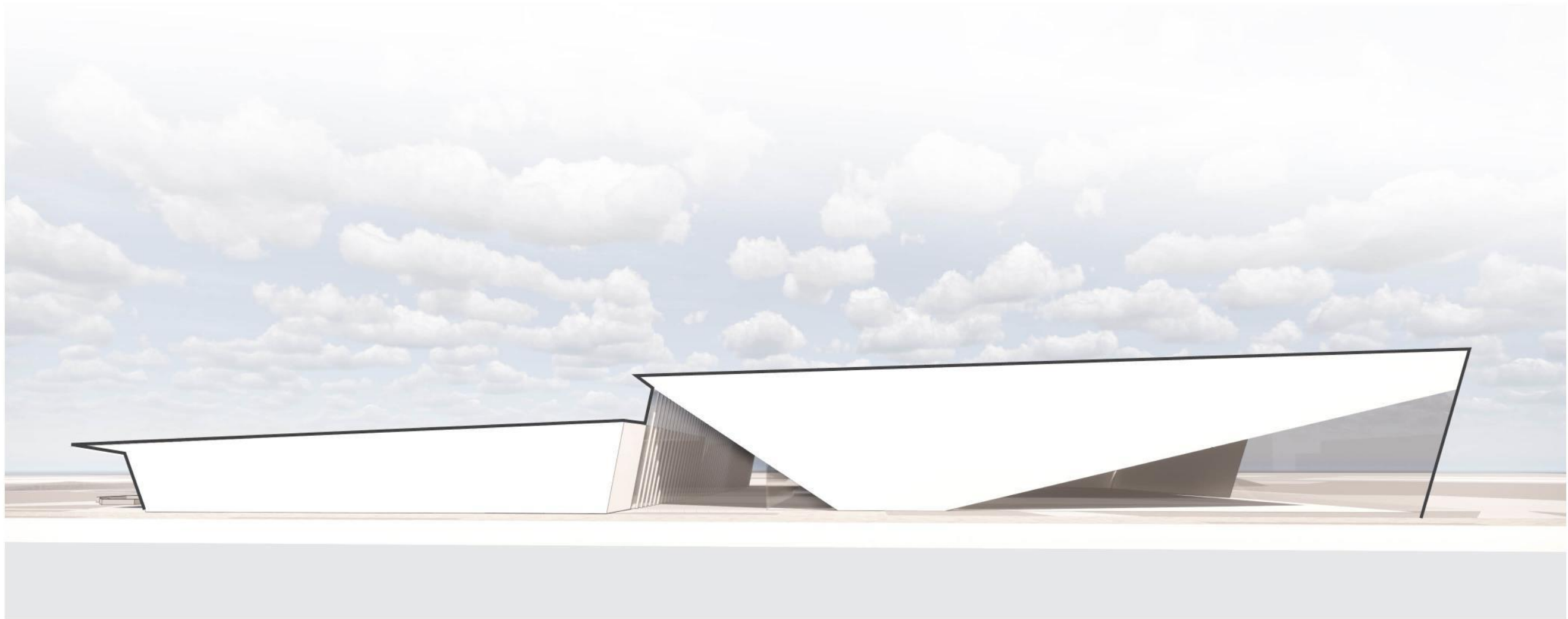




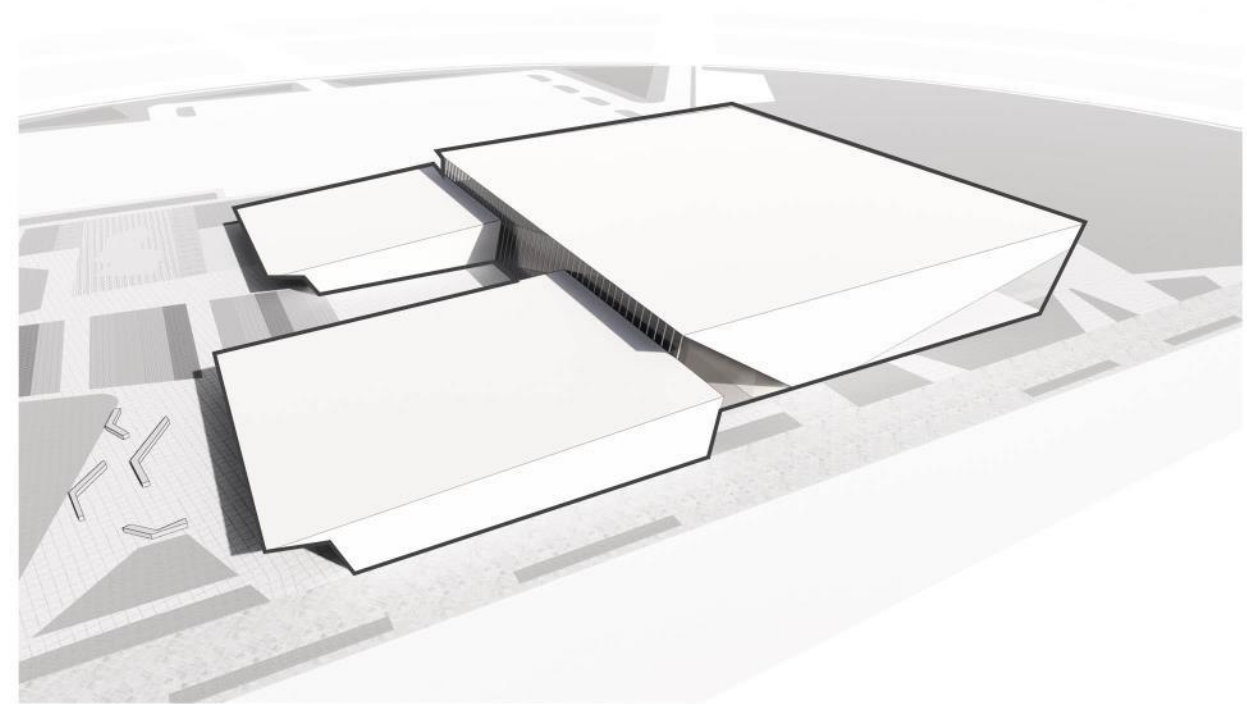
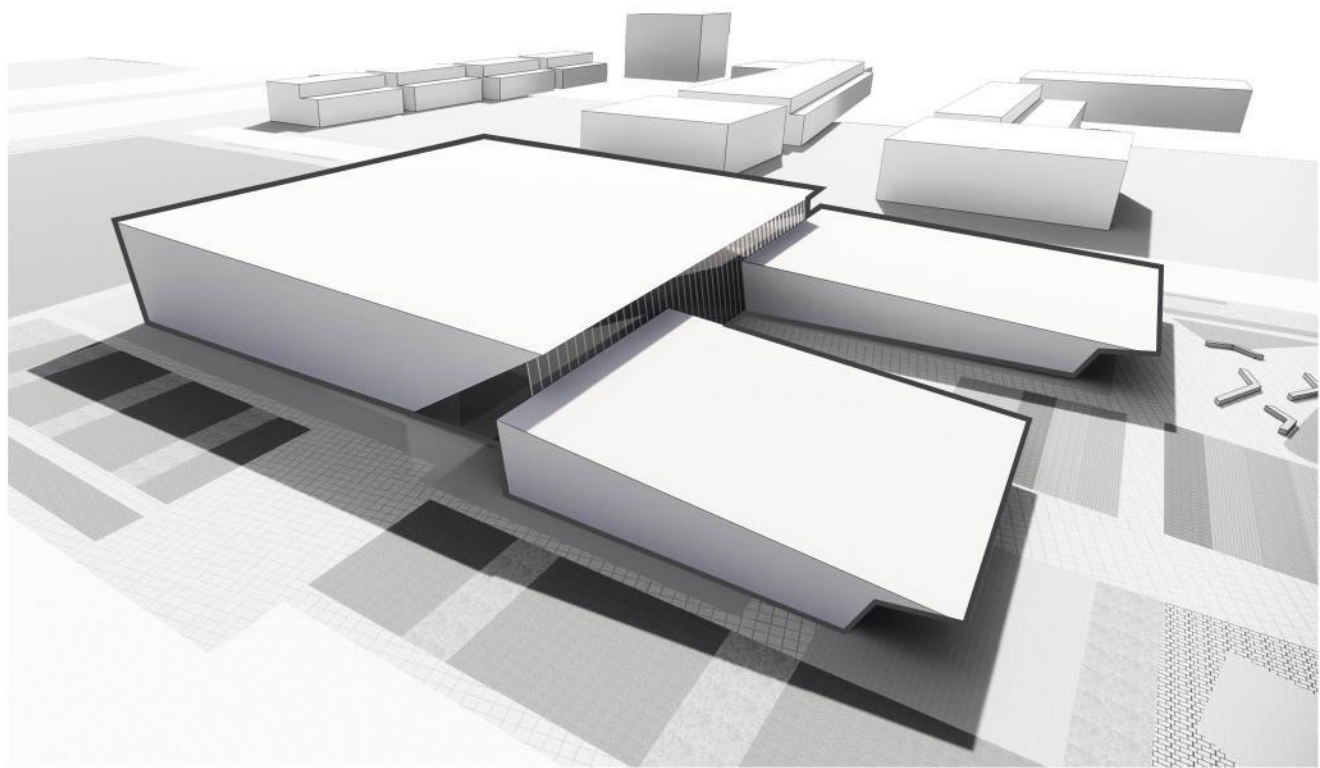
# GLACIAL LANDFORMS OF SOUTHERN ONTARIO AND THE OAK RIDGES MORAINE



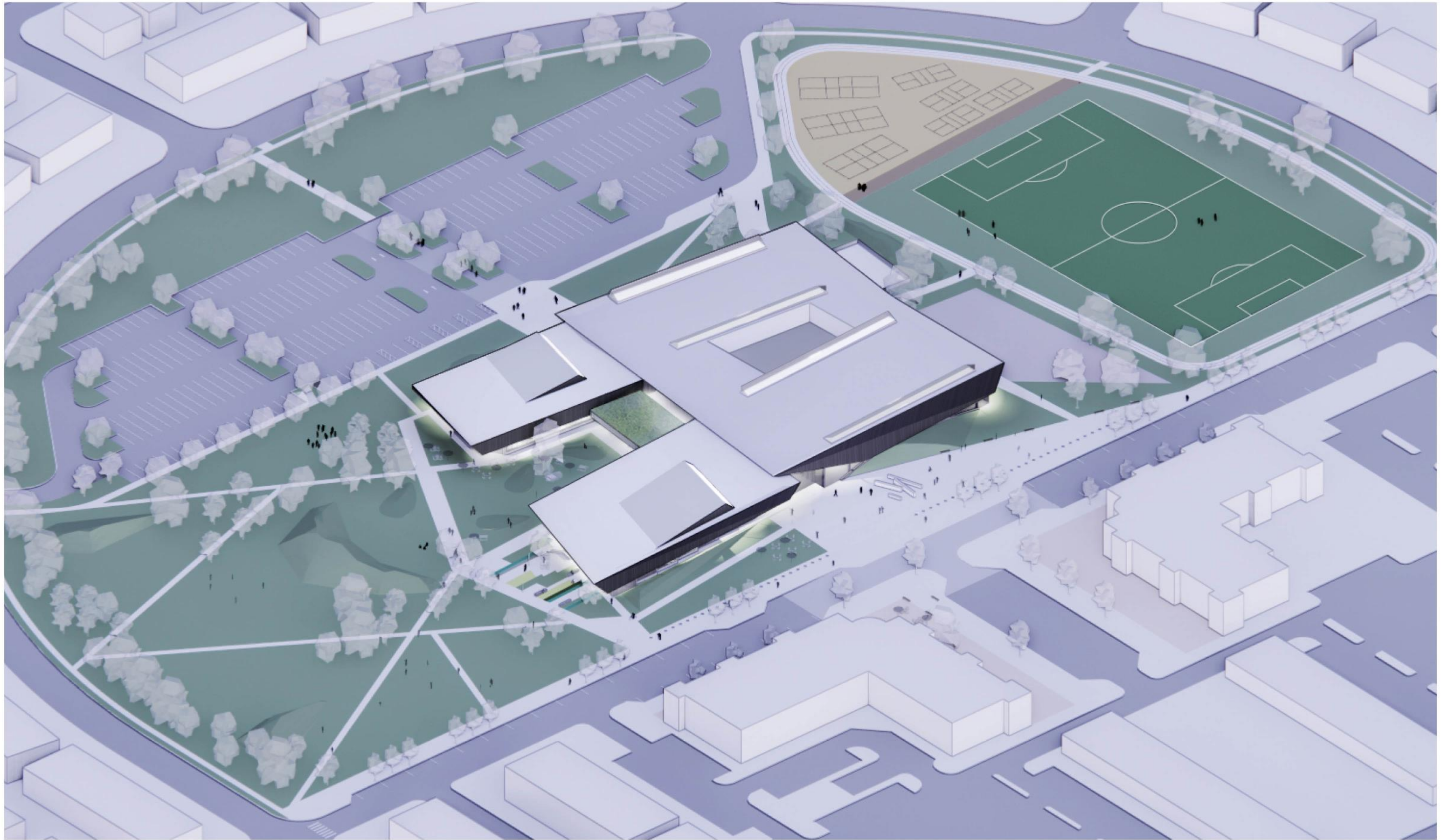




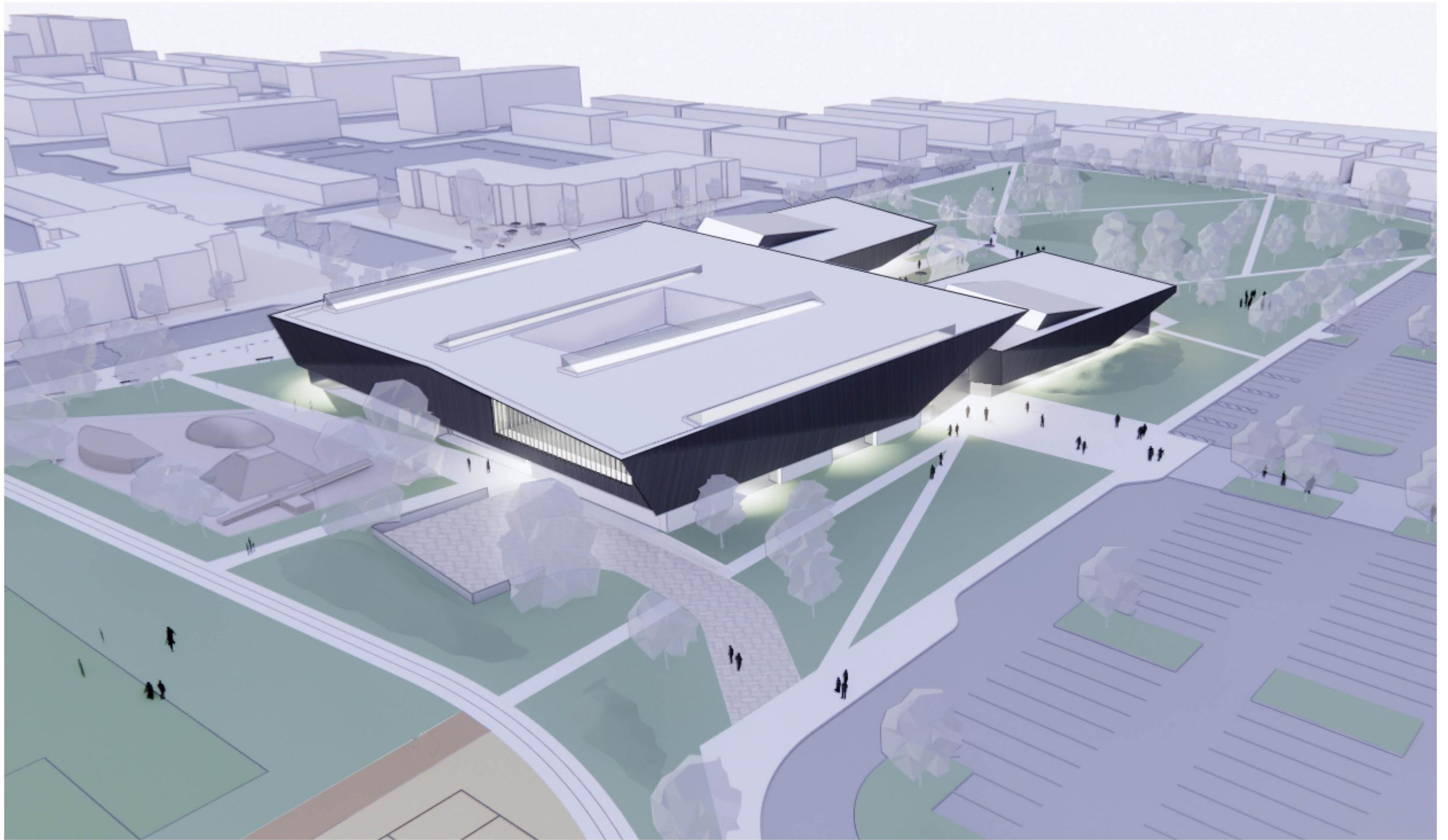




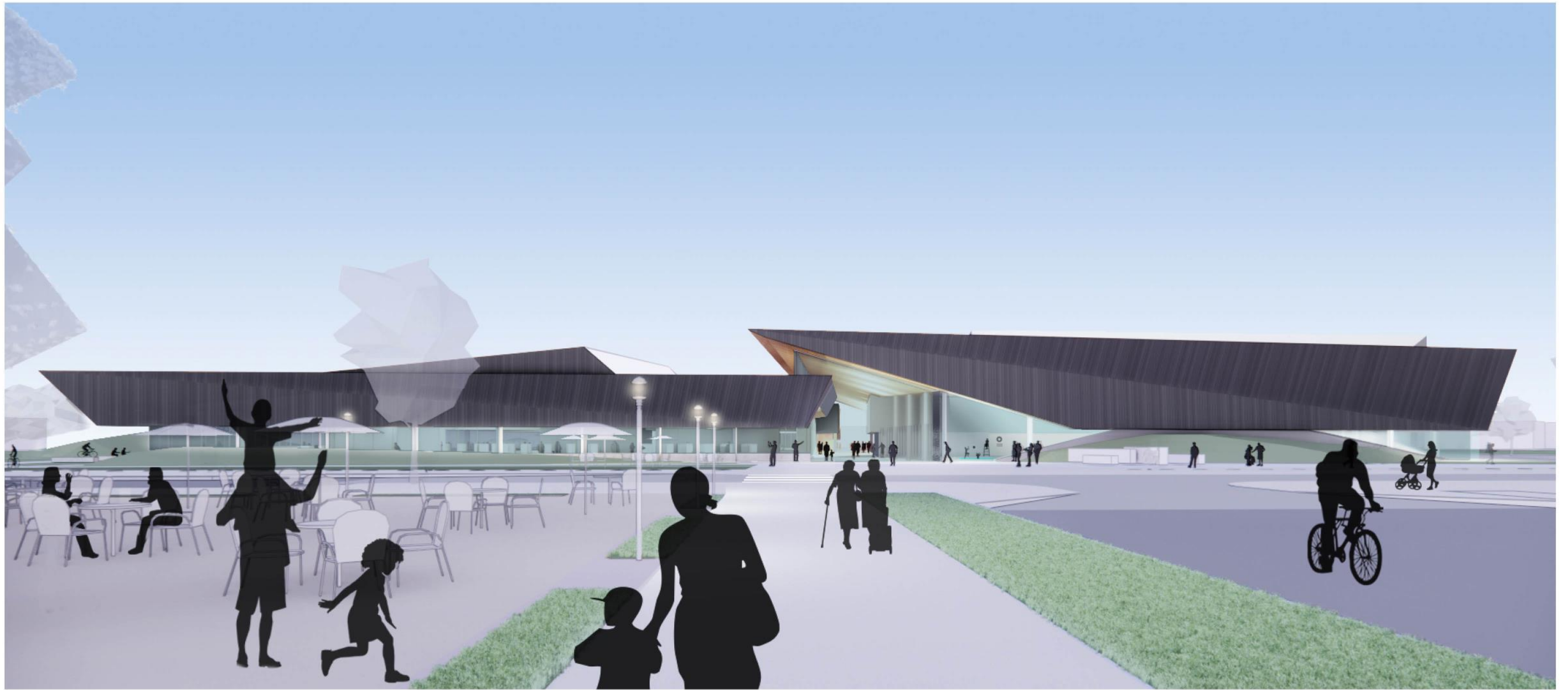










































# **CAPITAL AND OPERATING FINANCIAL PLANNING**



## DESIGN COSTS:

(ALL AMOUNTS LISTED ARE EXCLUDING TAXES)

<b>Phase 1: Facility Design</b>	<b>Amount</b>
Architect and Consulting Team	\$1,463,950.00
Site Plan Preparation and Studies	\$107,000
<b>Subtotal Design</b>	<b>\$1,570,950.00</b>
<b>Phase 2: Facility Contract Administration</b> (Subject to Future Reporting and Council Approval)	
Architect and Consulting Team	\$721,050.00

Note: Park Design to be awarded under separate report to Council and Contract Award May 20, 2020



# CAPITAL CONSTRUCTION COST ESTIMATE

(ALL AMOUNTS LISTED ARE EXCLUDING TAXES)

Recreation Facility	Amount
Recreation	+/- \$35,000,000
Library	+/- \$8,500,000
Park Space	+/- \$4,800,000
FF&E	+/- \$1,700,000
Total	+/- \$50,000,000

- CAPITAL CONSTRUCTION IS FUNDED BY DEVELOPMENT CHARGES AND COMMUNITY CAPITAL CONTRIBUTIONS
- THE TOWN HAS APPLIED FOR A INVESTING IN CANADA INFRASTRUCTURE PROGRAM GRANT. POTENTIAL FUNDING FOR UP TO 73% OF THE PROJECT COSTS



## **OPERATING COSTS AND PRE-PLANNING**

- **OPERATION OF THE HALP BEING PLANNED FOR +/- 40,000 RESIDENTS**
- **CPRC AND FINANCE STAFF WILL BE PROVIDING A DETAILED OPERATING FINANCIAL PLAN.**
- **NET OPERATING COSTS ARE ESTIMATED AT:**
  - **RECREATION FACILITY +/- \$1,000,000 PER YEAR**
  - **LIBRARY +/- \$400,000 PER YEAR**
  - **PARK +/- \$200,000 PER YEAR**
- **MULTI-YEAR FUNDING PLAN ESTABLISHED THROUGH THE ANNUAL BUDGETING PROCESS FOR THE OPERATION OF NEW TOWN FACILITIES (HALP AND OPS CENTRE)**



# THE WAY FORWARD



## **NEXT STEPS:**

- 1) DETAILED REPORT TO COUNCIL - MAY 20**
- 2) DETAILED DESIGN DEVELOPMENT**
- 3) ONGOING CONSULTANT COORDINATION**
- 4) DETAILED FINANCIAL PLAN AND PROJECT BUDGET**
- 5) CONTINUED PUBLIC OUTREACH**
- 6) FUTURE COUNCIL UPDATES**
- 7) THE WAY FORWARD**



# THE WAY FORWARD TO THE HEALTH & ACTIVE LIVING PLAZA

Design and  
Site Plan



2019-2021

Where we are  
today

Project  
Tender\*



+/-2021-2022



Prequalification  
of General  
Contractors

+/-2021

Facility  
Construction\*\*



+/-2022-2025



# TOWN OF EAST GWILLIMBURY HEALTH & ACTIVE LIVING PLAZA



Town of  
East Gwillimbury



COMMUNITY  
PARKS, RECREATION  
& CULTURE  
Active By Nature



EAST GWILLIMBURY  
Public Library

MJMA