

NOTE:  
 ALL STEEL ELEMENTS SHALL BE HOT DIPPED GALVANIZED AND FINISHED WITH PRIMER AND TWO COATS OF SEMI-GLOSS EXPOXY BLACK ENAMEL.

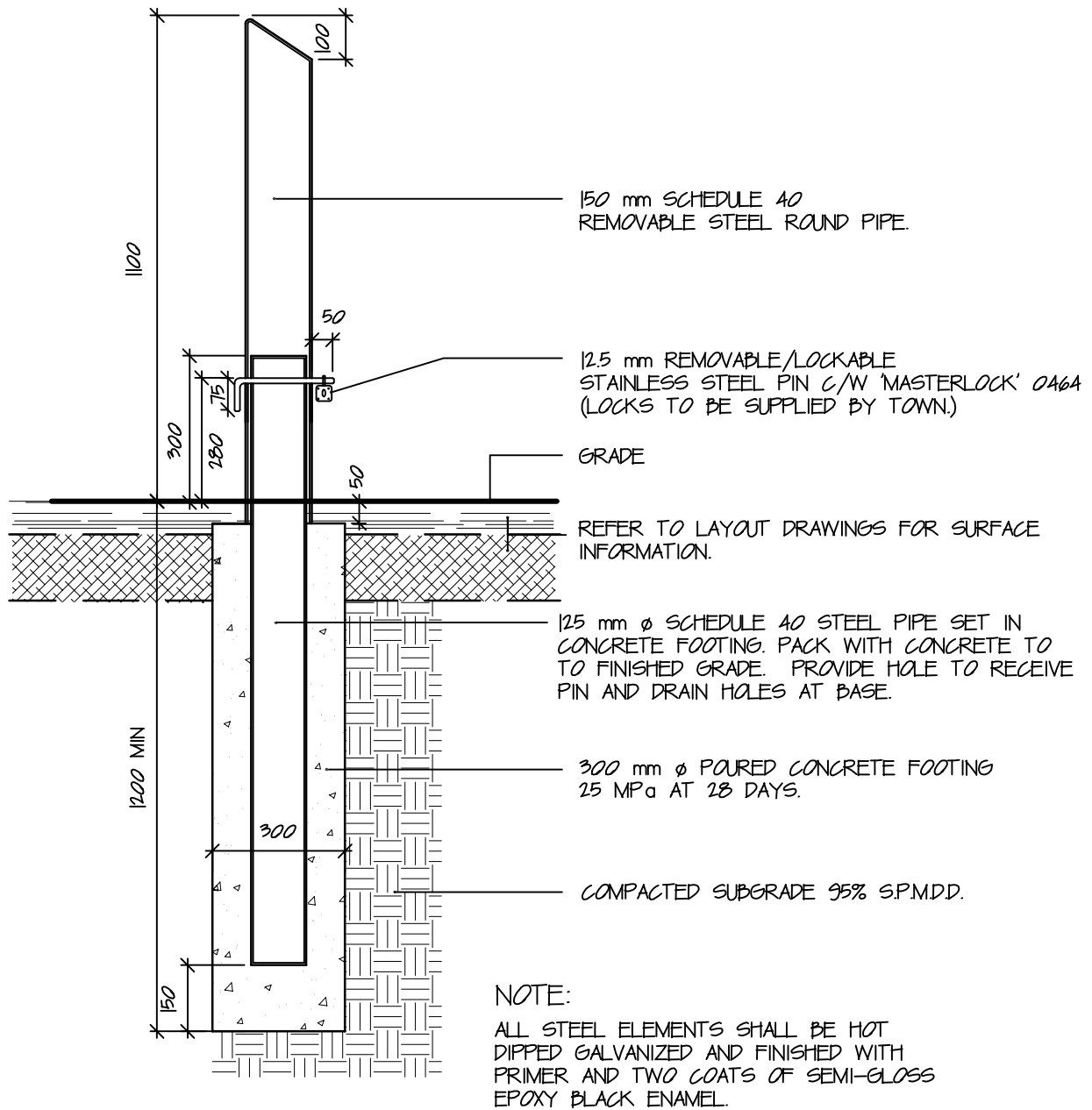


Town of  
**East Gwillimbury**

**PERMANENT BOLLARD**

**STANDARD DETAIL**

APPROVED	DWG. No.  <b>401</b>
REVISION No.	
DATE <b>2009</b>	



Town of  
East Gwillimbury

## REMOVABLE BOLLARD

### STANDARD DETAIL

APPROVED

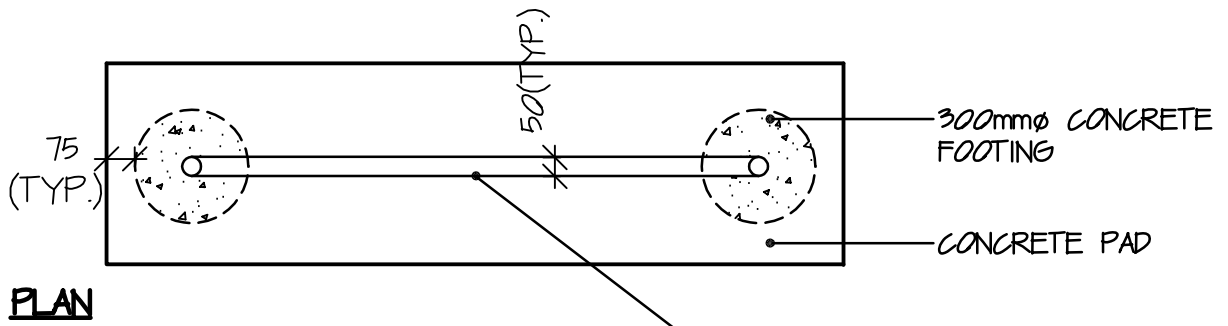
DWG. No.

REVISION No.

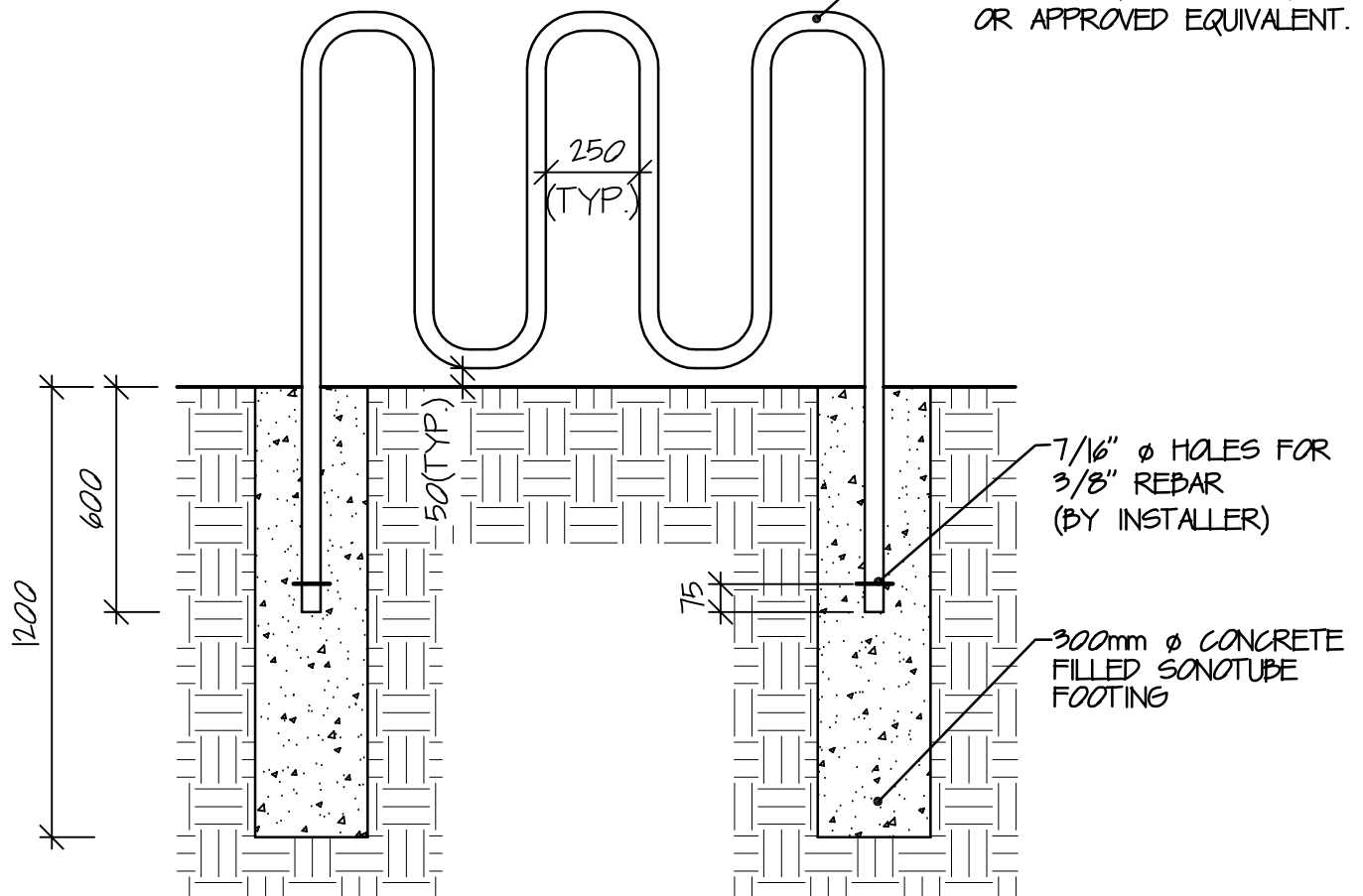
**402**

DATE

**2009**



STEEL PIPE BIKE RACK  
BY HENDERSON RECREATION,  
MODEL TRIO, COLOUR BLACK  
OR APPROVED EQUIVALENT.



Town of  
East Gwillimbury

**BICYCLE RACK**

**STANDARD DETAIL**

APPROVED COUNCIL

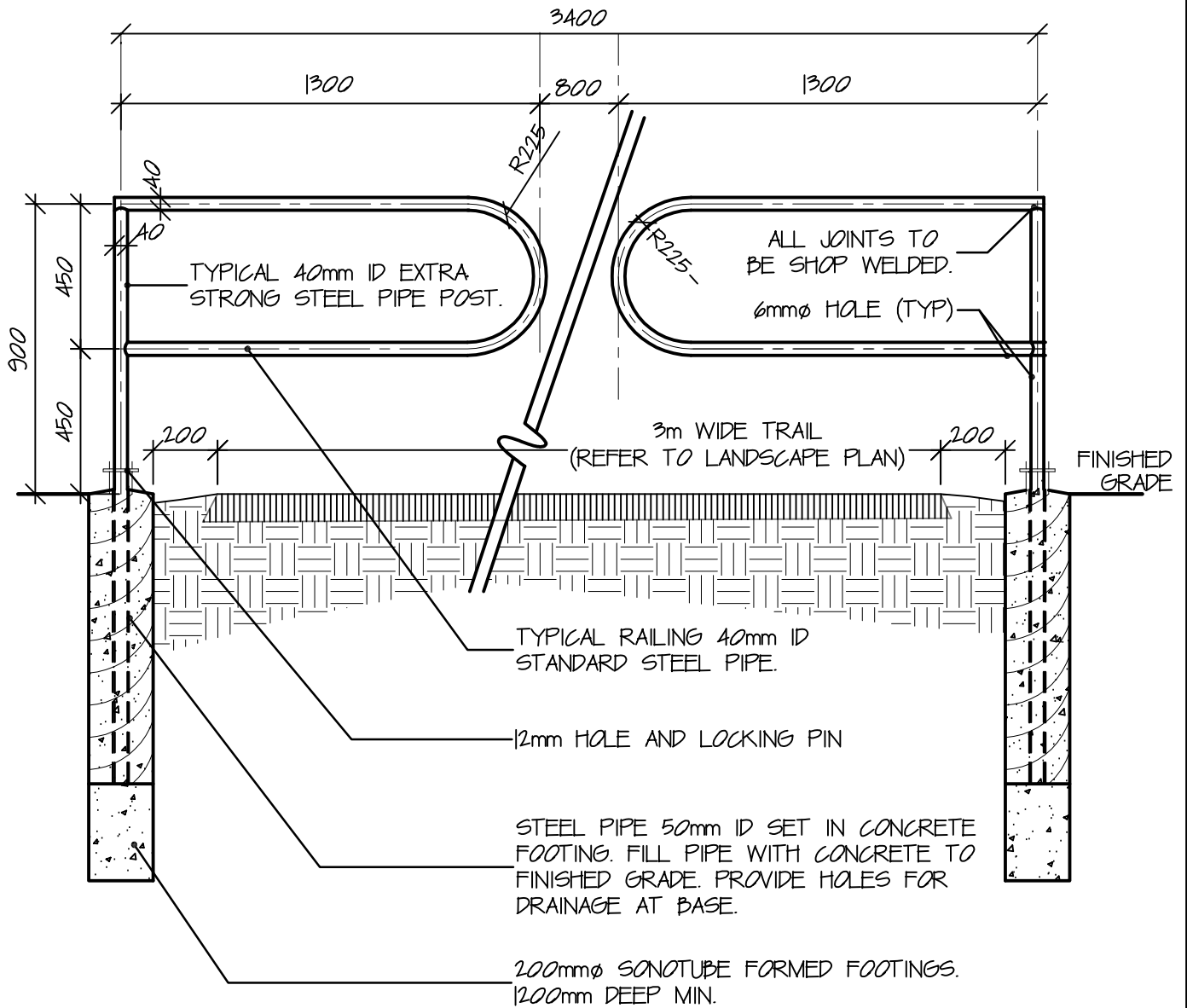
DWG. No.

REVISION No.

**403**

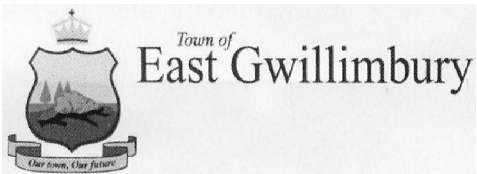
DATE

**2009**



**NOTES:**

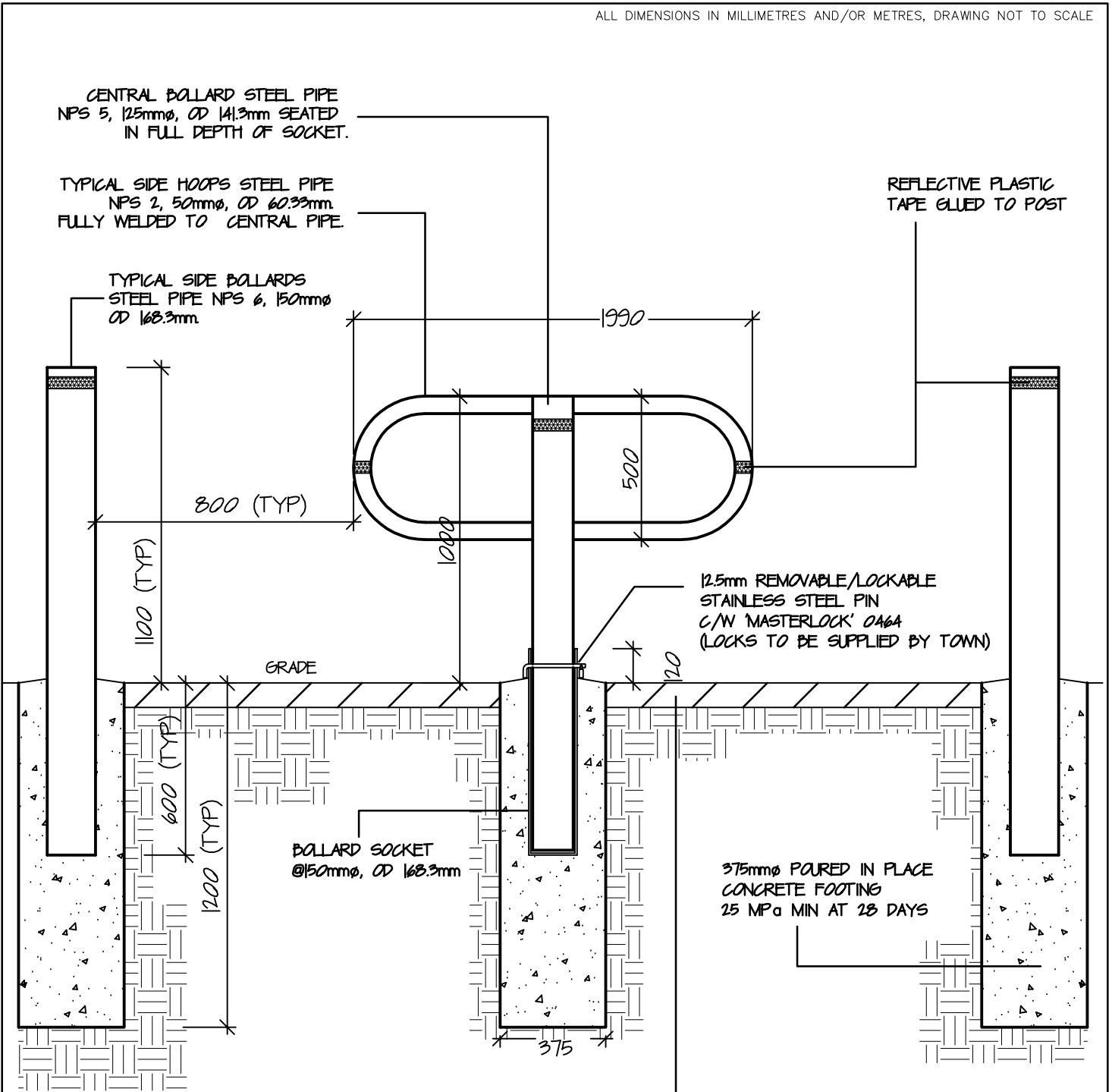
1. 6mm $\phi$  HOLES ARE TO PERMIT GASES TO ESCAPE DURING GALVANIZING.
2. CONCRETE TO BE 20MPa, AFTER 28 DAYS.
3. HAND RAIL TO BE HOT-DIPPED GALVANIZED AFTER FABRICATION IN CONFORMANCE WITH CSA G-164.
4. ALL EXPOSED CORNERS TO BE GRIND SMOOTH.
5. ALL DIMENSIONS ARE IN MILLIMETRES UNLESS OTHERWISE SHOWN.
6. LOCK TO BE SUPPLIED TO TOWN OF EAST GWILLIMBURY



**'P' GATE BARRIER**

**STANDARD DETAIL**

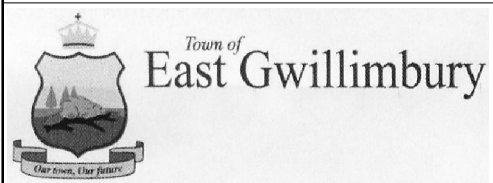
APPROVED	COUNCIL	DWG. No.
REVISION No.		<b>404</b>
DATE	<b>2009</b>	



**NOTE**

ALL STEEL ELEMENTS SHALL BE HOT DIPPED GALVANIZED

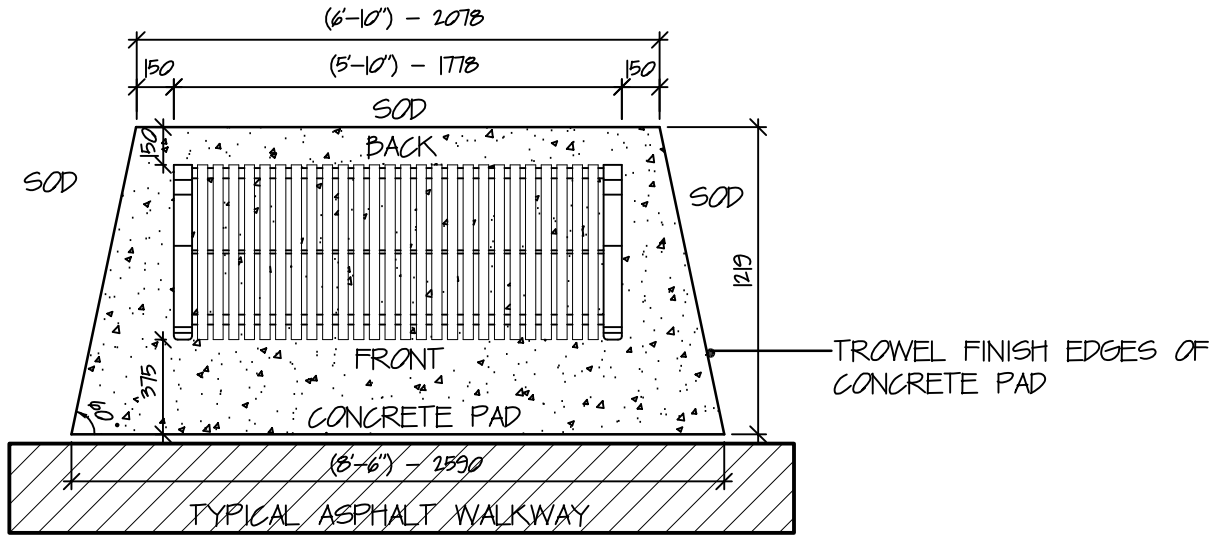
SURFACING GENERALLY ASPHALT  
INCLUDE FOR CLEAN CUTS AND  
REINSTATEMENT REFER TO LAYOUT  
DRAWING FOR SURFACE INFORMATION



**BOLLARD BARRIER**

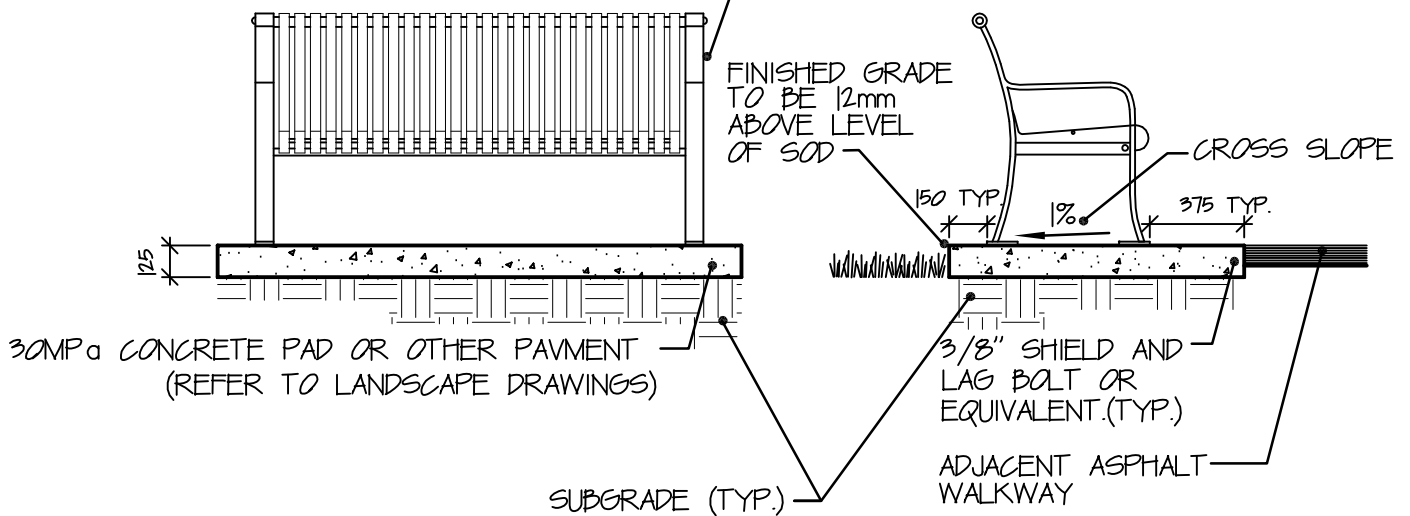
**STANDARD DETAIL**

APPROVED	DWG. No.
REVISION No.	<b>405</b>
DATE	
<b>2009</b>	



**PLAN VIEW**

TYPICAL BENCH MODEL NO. MLB510 OR MLB510B AS MANUFACTURED BY MAGLIN FURNITURE SYSTEMS LIMITED OR APPROVED EQUIVALENT.



**FRONT SECTION**

**SIDE SECTION**

**NOTES:**

1. ALL STEEL COMPONENTS ARE MAGLIN POWDER PAINT AS PER MANUFACTURERS SPECIFICATIONS.
2. BENCH COLOUR TO BE BLACK UNLESS OTHERWISE INDICATED.
3. THE BENCH IS DELIVERED PRE-ASSEMBLED. HOLES (0.5") ARE PROVIDED IN EACH FOOT FOR SECURING TO BASE. CONTRACTOR TO PROVIDE HARDWARE FOR INSTALLATION.
4. THE BACKLESS BENCH IS MODEL # MLB510B



Town of  
**East Gwillimbury**

**BENCH**

**STANDARD DETAIL**

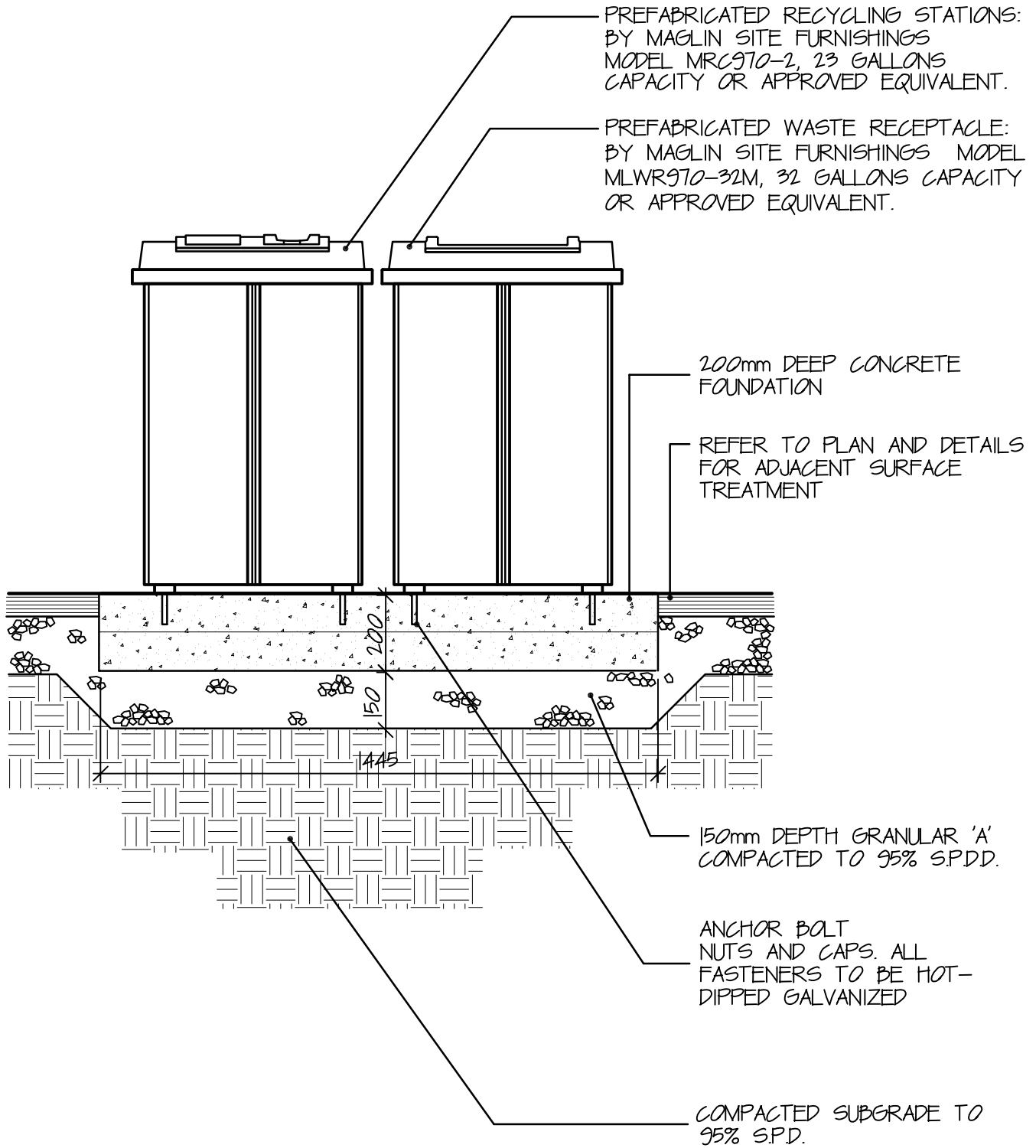
APPROVED COUNCIL

REVISION No.

DATE **2009**

DWG. No.

**406**



Town of  
East Gwillimbury

**DOUBLE WASTE RECEPTACLE  
WITH RECYCLING**

**STANDARD DETAIL**

APPROVED	DWG. No.  <b>407</b>
REVISION No.	
DATE <b>2009</b>	

**MATERIALS:**

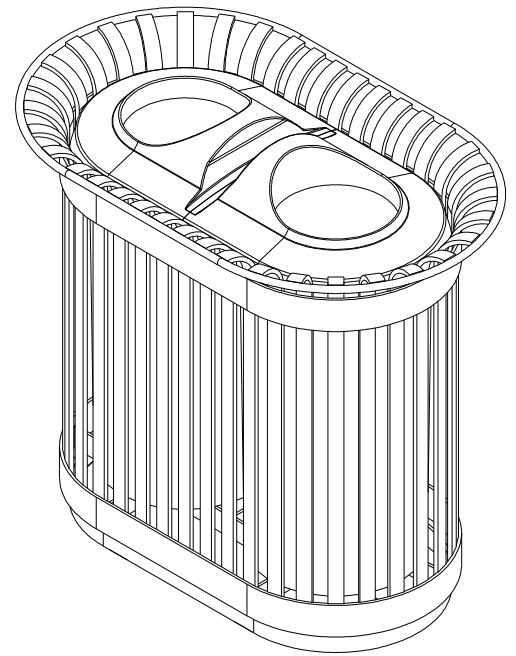
THE RECYCLING STATION FRAME CONSTRUCT USING HEAVY DUTY STEEL FLATBAR. PROVIDE 20 IMPERIAL GALLON COMMERCIAL GRADE PLASTIC LINERS AND BLACK MOLDED PLASTIC LID.

**FINISH:**

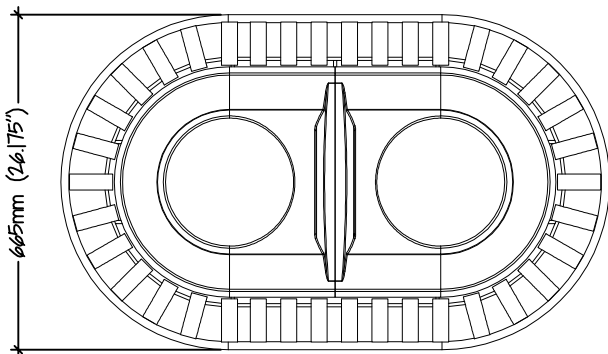
ALL STEEL COMPONENTS ARE PROTECTED WITH E-COAT RUST PROOFING.

**INSTALLATION:**

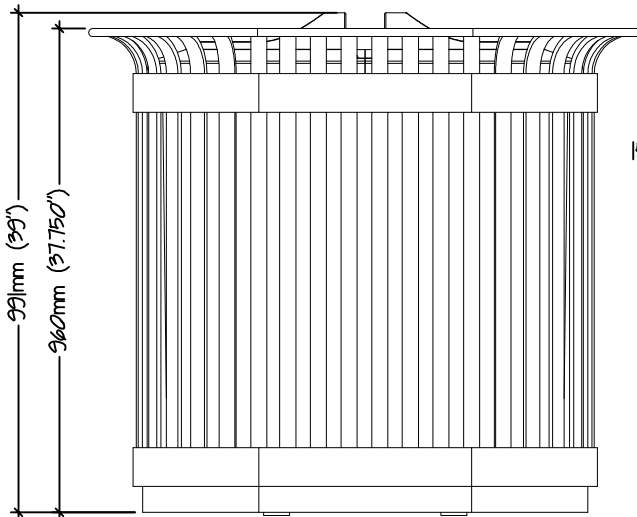
THE RECYCLING STATION IS DELIVERED PRE-ASSEMBLED. HOLES (0.5") ARE PROVIDED IN EACH MOUNTING FOOT FOR SECURING TO BASE.



MAGLIN PRODUCT MRC-201, 3 UNIT CONFIGURATION REFER TO MRC-203

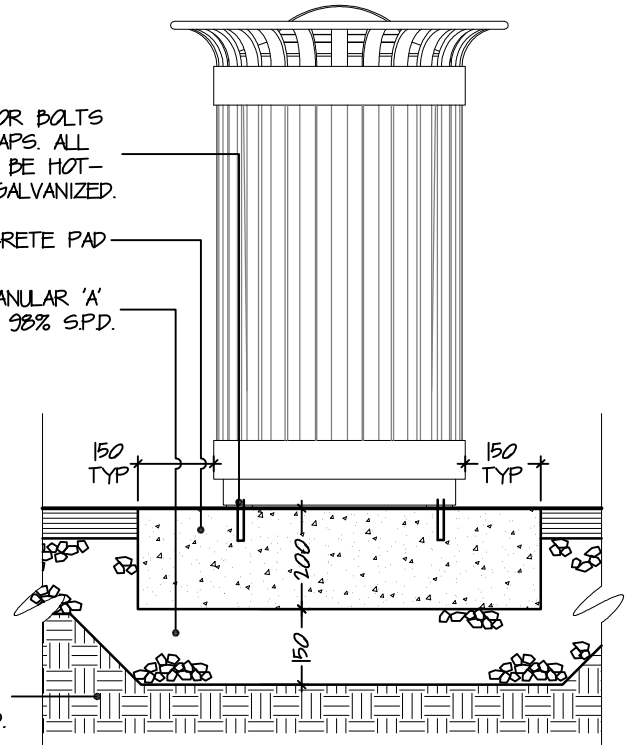


**PLAN VIEW**



**ELEVATION**

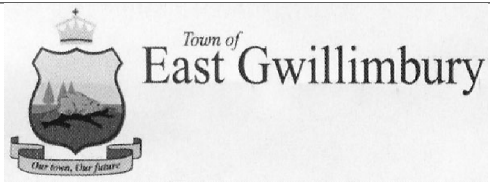
65mmØ ANCHOR BOLTS NUTS AND CAPS. ALL FASTENERS TO BE HOT-DIPPED GALVANIZED.  
POURED CONCRETE PAD  
150mm DEPTH GRANULAR 'A' COMPACTED TO 98% SPD.



**ELEVATION SECTION**

**NOTE:**

1. RECYCLING STATIONS BY MAGLIN SITE FURNITURE INC. (MRC 201) OR APPROVED EQUIVALENT.



**2-UNIT RECYCLE STATION**

STANDARD DETAIL	
APPROVED	DWG. No.
REVISION No.	<b>408</b>
DATE	
<b>2009</b>	



**MATERIALS:**

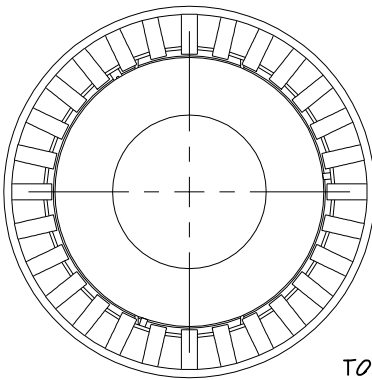
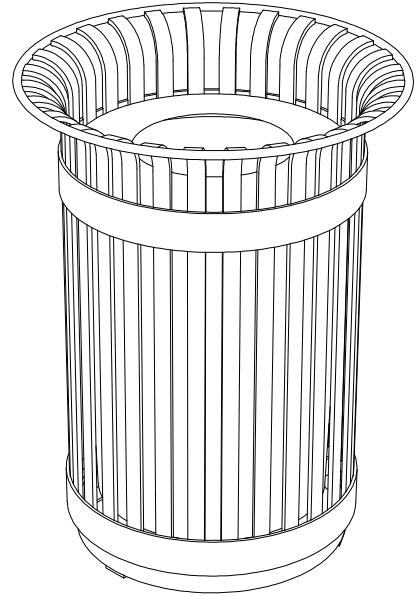
THE RECYCLING STATION FRAME CONSTRUCT USING HEAVY DUTY STEEL FLATBAR. PROVIDE A 32 IMPERIAL GALLON COMMERCIAL GARDE PLASTIC LINERS AND SPUN METAL LID.

**FINISH:**

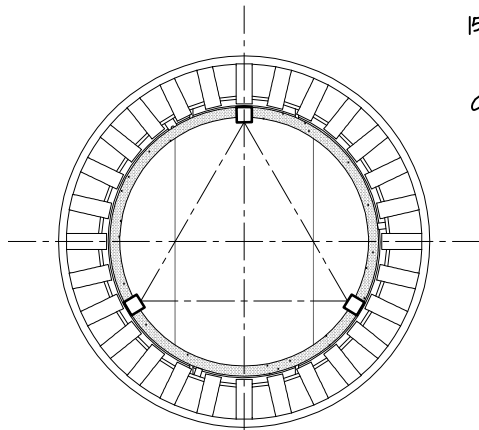
ALL STEEL COMPONENTS ARE PROTECTED WITH E-COAT RUST PROOFING.

**INSTALLATION:**

THE TRASH CONTAINER IS DELIVERED PRE-ASSEMBLED. HOLES (0.5") ARE PROVIDED IN EACH MOUNTING FOOT FOR SECURING TO BASE.



PLAN VIEW



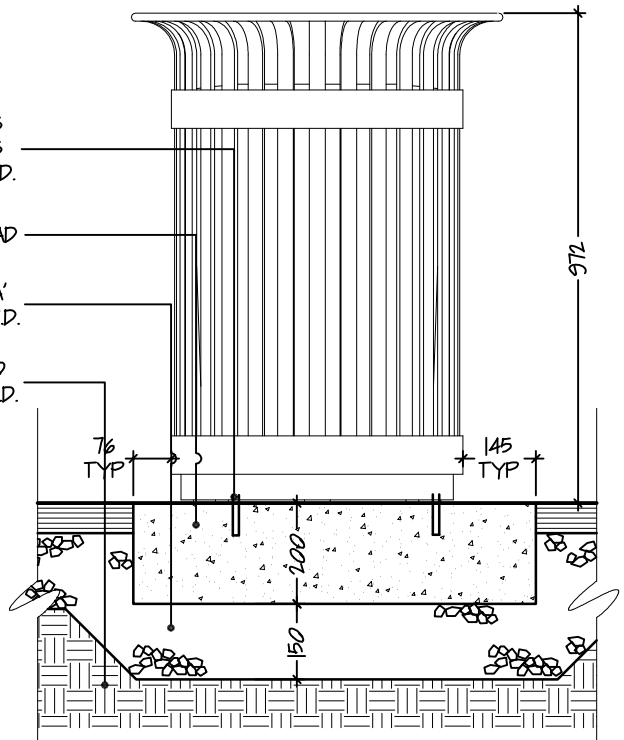
PLAN SECTION

65mmØ ANCHOR BOLTS NUTS AND CAPS. ALL FASTENERS TO BE HOT-DIPPED GALVANIZED.

POURED CONCRETE PAD

150mm DEPTH GRANULAR 'A' COMPACTED TO 98% S.P.D.

COMPACTED SUBGRADE TO 98% S.P.D.



ELEVATION SECTION

**NOTE:**

1. RECYCLING STATIONS BY MAGLIN SITE FURNITURE INC. (MRC 201) OR APPROVED EQUIVALENT.



Town of East Gwillimbury

**TRASH CONTAINER**

**STANDARD DETAIL**

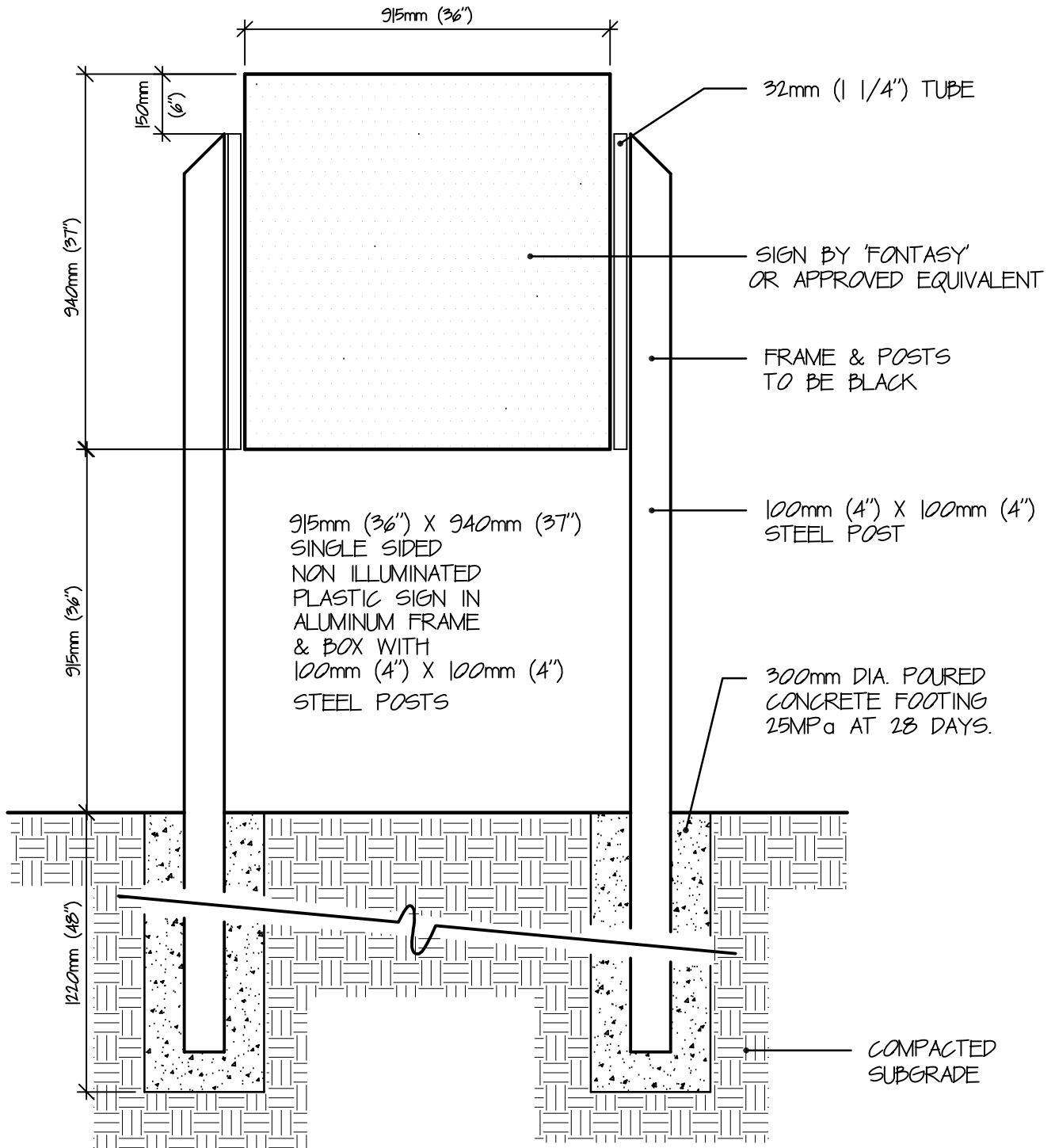
APPROVED

REVISION No.

DATE **2009**

DWG. No.

**409**



Town of  
East Gwillimbury

**DIRECTORY SIGNAGE**

**STANDARD DETAIL**

APPROVED

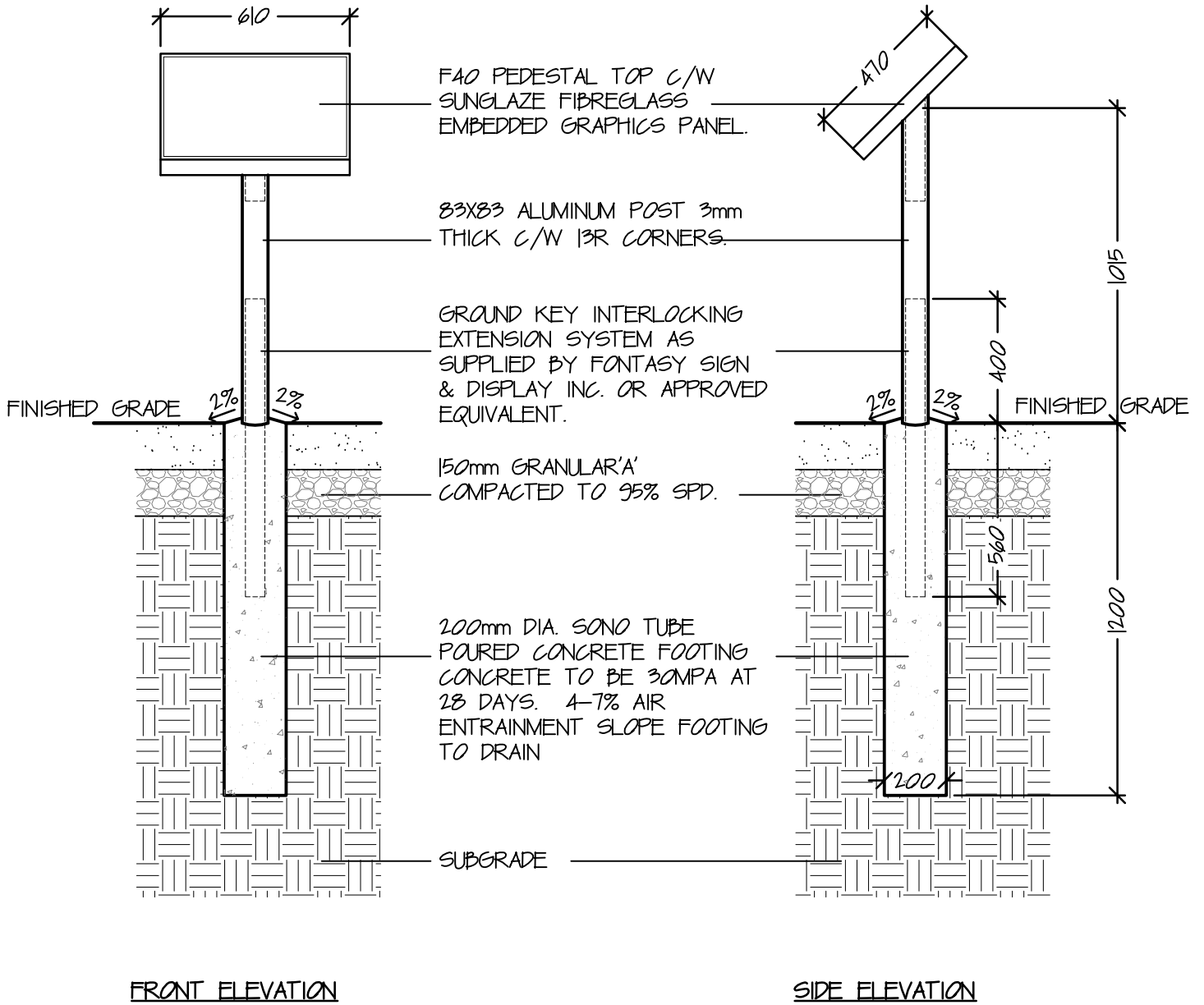
DWG. No.

REVISION No.

**410**

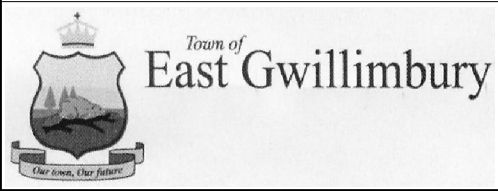
DATE

**2009**



**NOTE:**

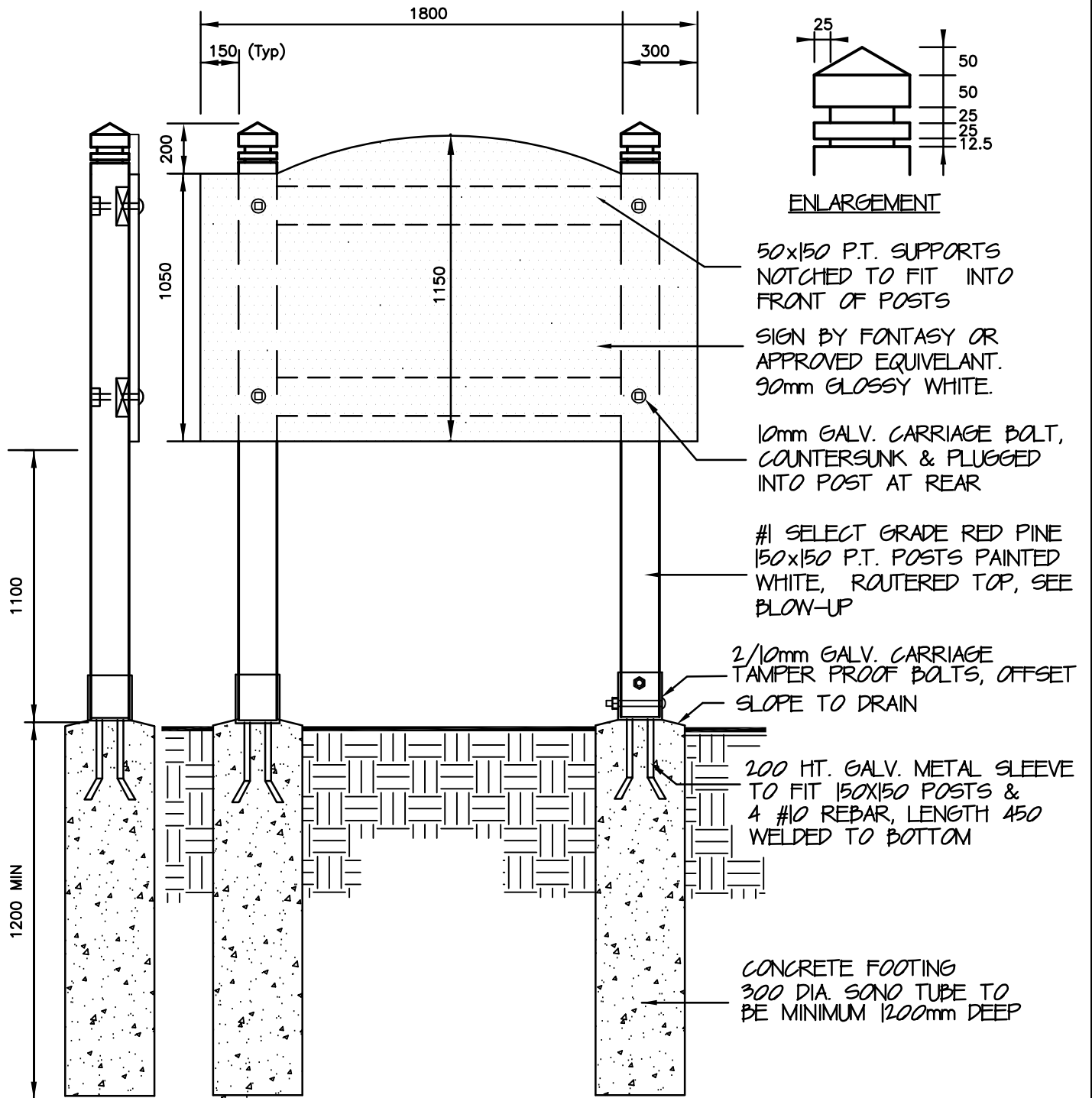
- SIGNAGE DISTRIBUTED BY FANTASY SIGN & DISPLAY INC. OR APPROVED EQUIVALENT.



**INTERPRETIVE SIGN BOARDS**

**STANDARD DETAIL**

APPROVED	DWG. No.
REVISION No.	<b>411</b>
DATE	<b>2009</b>



**NOTES**

1. ALL DIMENSIONS IN MILLIMETRES.
2. CONCRETE TO BE 25MPA CLASS 'A' CONCRETE MAX. CEMENT/WATER RATIO 0.5% AT 28 DAYS 6% AIR ENTRAINMENT.

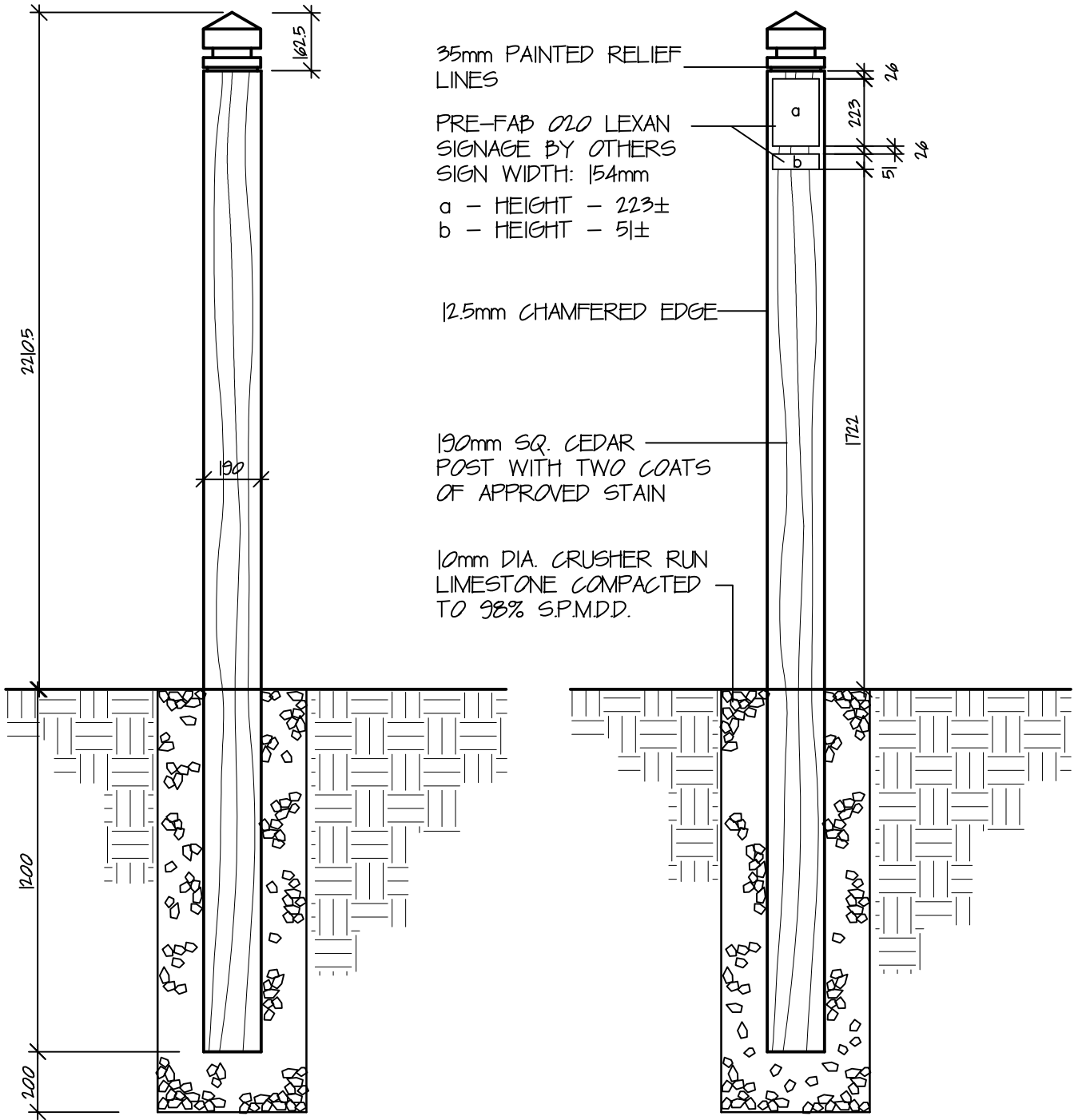


Town of East Gwillimbury

**PARK ENTRANCE SIGN**

**STANDARD DETAIL**

APPROVED	DWG. No.
REVISION No.	<b>412</b>
DATE	
<b>2009</b>	



NOTE:

1 - POST ORIENTATION TO BE STAKED OUT ON-SITE BY LANDSCAPE ARCHITECT



Town of  
East Gwillimbury

## SIGNAGE POST

### STANDARD DETAIL

APPROVED

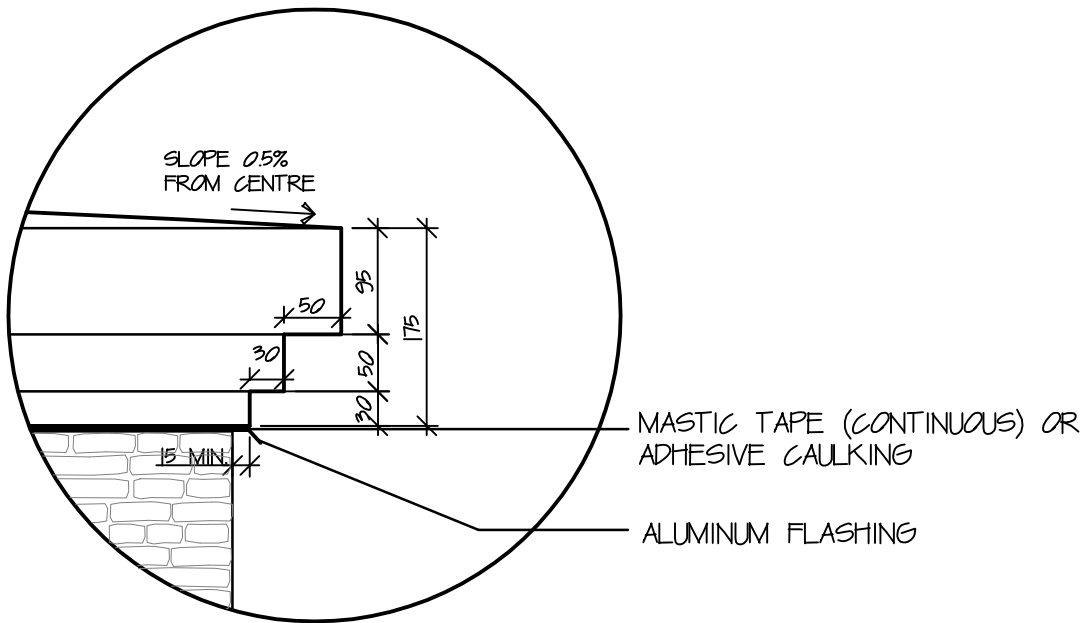
DWG. No.

REVISION No.

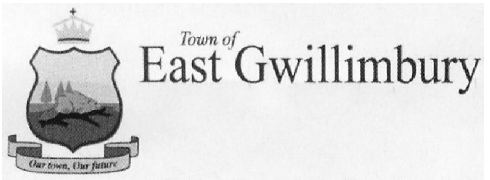
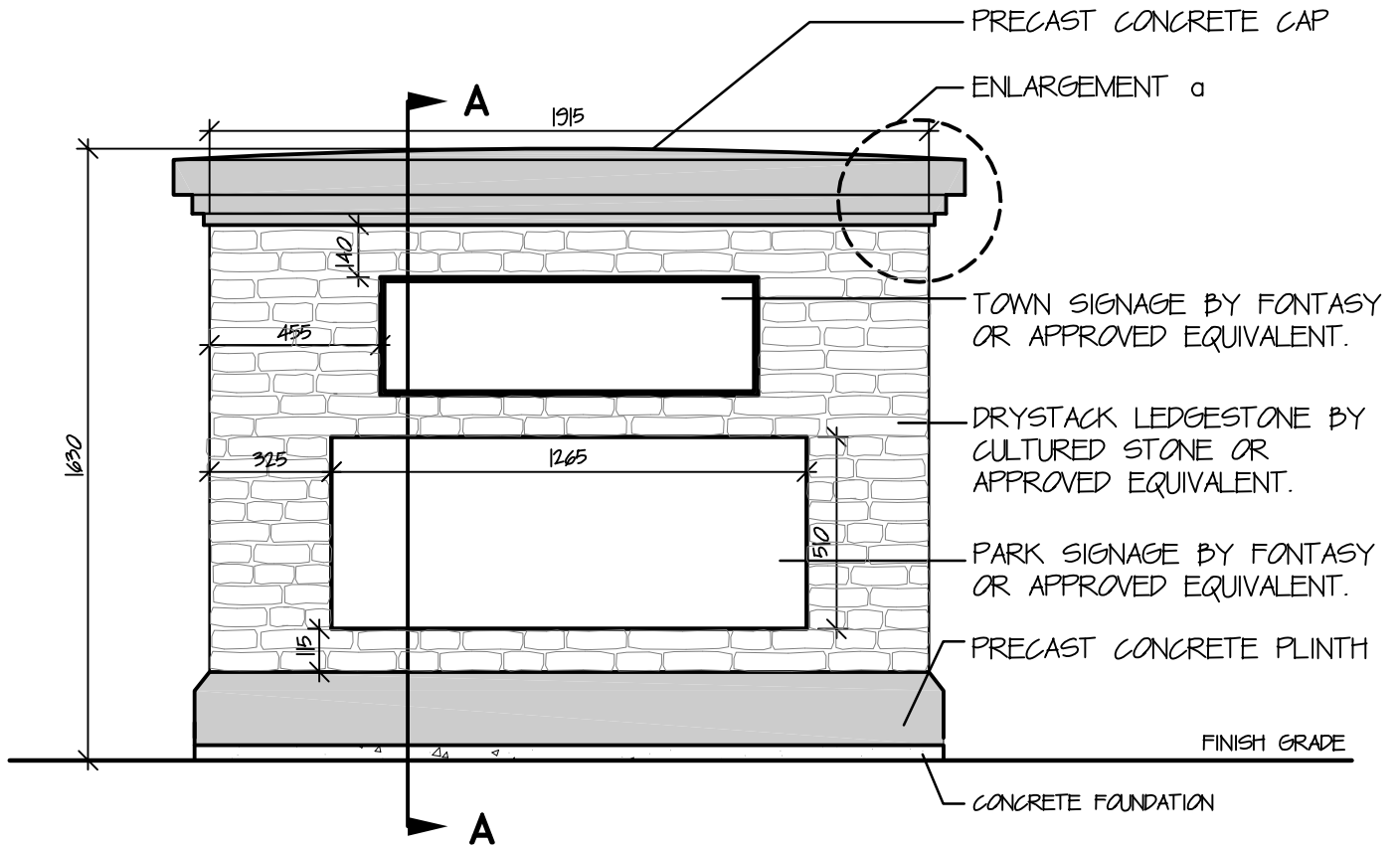
**413**

DATE

**2009**

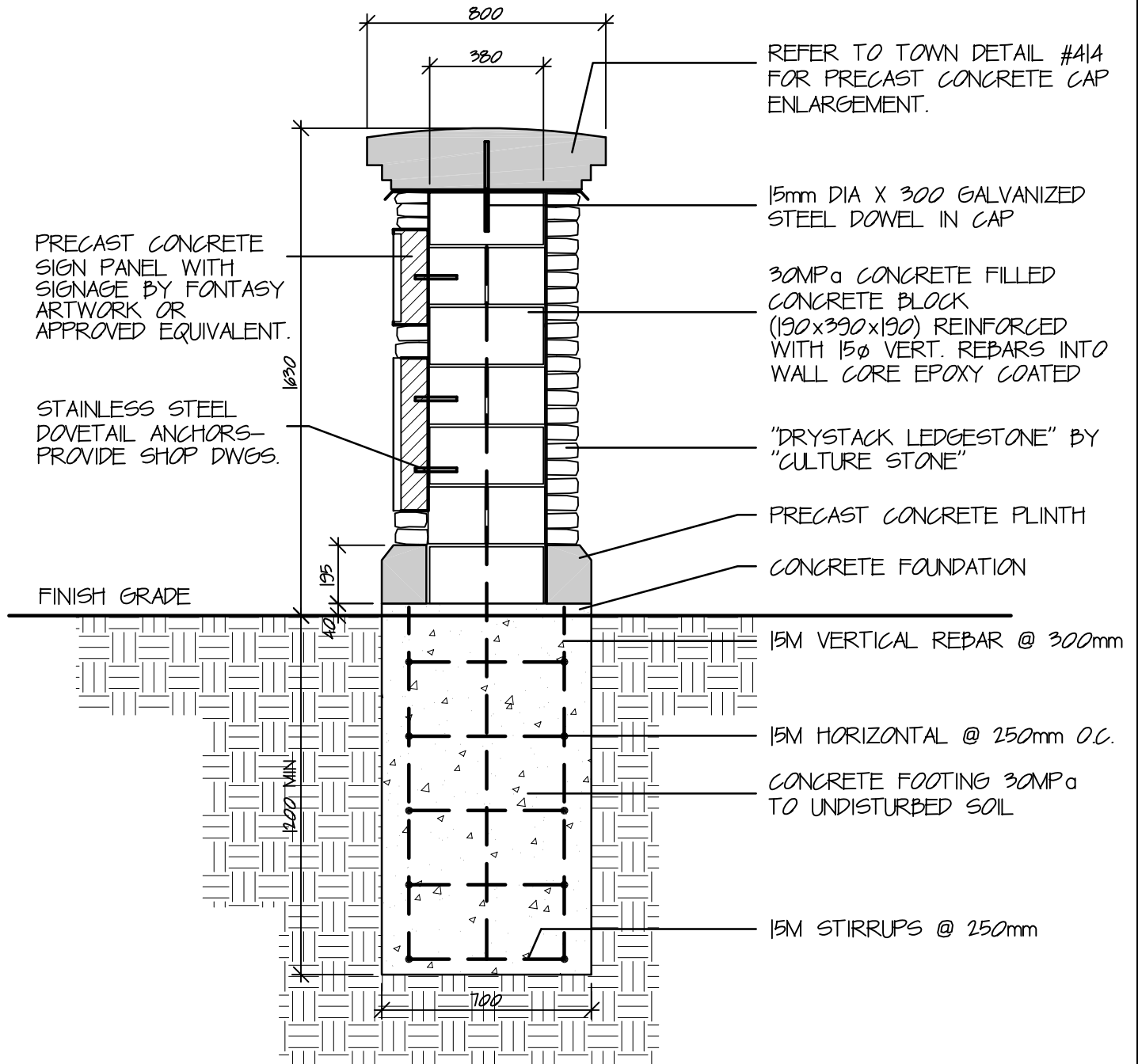


**ENLARGEMENT a**  
**PRECAST CONCRETE CAP**



**MASONRY  
ENTRANCE FEATURE  
ELEVATION**

STANDARD DETAIL	
APPROVED	DWG. No.
REVISION No.	<b>414</b>
DATE	
<b>2009</b>	



Town of  
East Gwillimbury

**MASONRY  
ENTRANCE FEATURE  
SECTION**

**STANDARD DETAIL**

APPROVED

DWG. No.

REVISION No.

**415**

DATE

**2009**